



McCoy Global, Inc. (TSX:MCB) provides innovative products and services to the global energy industry. The Company is focused on growth as it partners with clients that operate both onshore and offshore, and the Company is also committed to innovation through investments in engineering and new product development. McCoy's long term vision is to become a significant growth-oriented company by broadening its global reach of products, continued market leadership, ongoing technological innovation and focusing on efficient operations.

McCoy Global operates internationally through direct sales, agents and distributors. The Company's operations are based out of the Western Canadian Sedimentary Basin and the US Gulf Coast. Corporate offices are in Edmonton, Alberta, Canada with regional offices in Alberta, British Columbia, Louisiana, Texas, Aberdeen and Singapore.

McCoy Global is engaged in the manufacturing of drilling equipment, as well as service and replacement parts for the global energy market. The Company manufactures, services and sells drilling and completion equipment including power tongs, bucking and make/break units, torque/turn monitoring systems, dies and inserts, consumable replacement parts for rig equipment and other products and services.



# CONTACT US

## **MCCOY GLOBAL INC.**

---

Suite 301  
9618 - 42 Avenue NW  
Edmonton, AB T6E 5Y4  
Canada  
Phone: +1.780.453.8451

## **MCCOY GLOBAL CANADA**

---

14755 - 121A Avenue NW  
Edmonton, AB T5L 2T2  
Canada  
Phone: +1.780.453.3277  
Fax: +1.780.455.2432

## **MCCOY GLOBAL USA - TONGS & BUCKING UNITS**

---

4225 Highway 90 East  
Broussard, LA 70518  
United States of America  
Phone: +1.337.837.8847  
Fax: +1.337.837.8839

## **MCCOY GLOBAL USA - DIES & INSERTS**

---

4225 1/2 Highway 90 East  
Broussard, LA 70518  
United States of America  
Phone: +1.337.837.6666  
Fax: +1.337.837.6661

## **MCCOY GLOBAL USA - RICHMOND AVE.**

---

10333 Richmond Avenue, Suite 715  
Houston, TX 77042  
United States of America  
Phone: +1.832.303.7400  
Fax: +1.713.278.8024

## **MCCOY GLOBAL USA - PETROPARK (SERVICE)**

---

6530 Petropark Drive  
Houston, TX 77041  
United States of America  
Phone: +1.281.377.4264

## **MCCOY GLOBAL UK LTD.**

---

Units 9/10 Ocean Trade Center  
Minto Avenue, Altens Industrial Estate  
Aberdeen AB12 3JZ  
United Kingdom  
Phone: +44.1224.245140  
Fax: +44.1224.890176

## **MCCOY GLOBAL S.A.R.L.**

---

Warehouse No. FZS1BJ03  
Jebel Ali Free Zone - South Zone  
Dubai  
United Arab Emirates  
Phone: +971.4803.6900  
Fax: +971.4803.6909

## **MCCOY GLOBAL SINGAPORE PTE LTD.**

---

49 Tuas View Loop  
Singapore 637701  
Republic of Singapore  
Phone: +65.6335.7660  
Fax: +65.6335.7669

# CAPABILITIES

McCoy Global's office and plant facilities house state-of-the-art manufacturing equipment operated by highly trained and experienced individuals. Our manufacturing facilities are ISO 9001:2008 certified to ensure that all equipment conforms to the highest standards. We follow the standards of lean manufacturing to ensure customers receive the highest quality product at the best price with the fastest delivery in the industry. Our engineering departments are the top in our industry, designing and modifying tools to fit customer specifications.

## **MANUFACTURING & SERVICE FACILITIES:**

- Edmonton, AB, CAN
- Houston, TX, USA
- Broussard, LA, USA

## **CORPORATE OFFICES:**

- Edmonton, AB, CAN
- Houston, TX, USA

## **SALES OFFICES:**

- Edmonton, AB, CAN
- Houston, TX, USA
- Broussard, LA, USA

## **SERVICE/SUPPORT HUBS:**

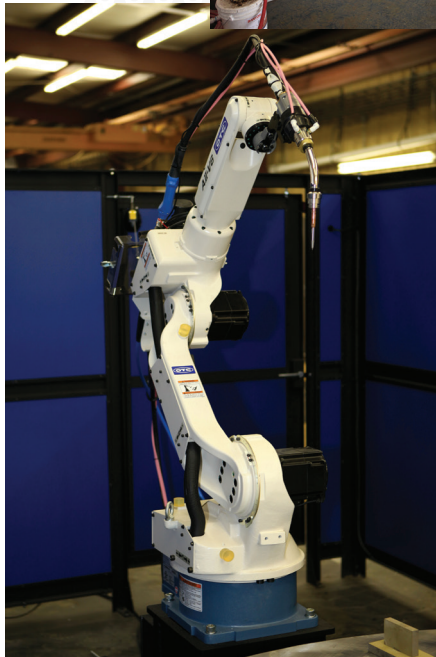
- Edmonton, AB, CAN
- Houston, TX, USA
- Broussard, LA, USA
- Aberdeen, UK
- Dubai, UAE
- Singapore

## **STATE-OF-THE-ART EQUIPMENT:**

- Waterjet
- Robotic Welder
- FARO and CMM
- 4th & 5th Axis capabilities
- Test Stand

The Broussard manufacturing facility has been awarded the following certifications from American Petroleum Institute (API) to Design, Manufacture and Repair Power Tongs and other related tubular handling products:

- Specification Q1 (Q1-1242)
- ISO 9001-2008 (Registration no. 1429)
- API ISO/TS29000 (TS-1132)



# TONG SELECTION CHART

TONG MODEL NUMBER	SIZE RANGE TONG INCHES (mm)	SIZE RANGE BACKUP INCHES (mm)	MAX TORQUE FT.LBS. (Nm)	WEIGHT (APPROX) LBS. (Kg)	FLOW RATE GPM/LPM (PSI/BAR)	TONG ARM LENGTH INCHES (mm)
CLE3500 BACKUP: BUCS4000 <b>LOCKJAW™</b>	1.66 - 3.5 (42.1 - 88.9)	1.66 - 4.0 (42.1 - 101.6)	6,500 (8,812)	1,145 (519)	40/151 (3,000/207)	24.625 (625)
CLE5500UHT BACKUP: <b>CLINCHER®</b> BUC6250	2.063 - 5.5 (52.4 - 139.7)	2.063 - 6.25 (52.4 - 158.7)	25,000 (33,895)	3,475 (1,576)	60/227 (3,000/207)	32.5 (825)
CLE5500XHT BACKUP: <b>LOCKJAW™</b> BUCD5500XHT	2.063 - 5.5 (52.4 - 139.7)	2.063 - 5.5 (52.4 - 139.7)	40,000 (54,232)	3,500 (1,587)	40/151 (3,000/207)	32.50 (825)
CLE7625UHT BACKUP: <b>CLINCHER®</b> BUC8625	2.375 - 7.625 (60.3 - 193.6)	2.375 - 8.625 (60.3 - 219)	30,000 (40,674)	3,475 (1,576)	65/246 (3,000/207)	37.25 (946)
CLE8625XHT BACKUP: <b>LOCKJAW™</b> BUCDP8625	2.375 - 8.625 (60.3 - 219)	2.375 - 8.625 (60.3 - 219)	85,000 (115,244)	4,500 (2,047)	68/257 (3,000/207)	40 (1,016)
CLE14000 BACKUP: <b>LOCKJAW™</b> BUCS15000	4.5 - 14.0 (114.3 - 355.6)	3.5 - 15.0 (88.9 - 381)	50,000 (67,790)	5,700 (2,585)	60/227 (2,500/172)	40 (1,016)
CLE14000DP BACKUP: <b>LOCKJAW™</b> BUCS15000	4.5 - 14.375 (114.3 - 365.1)	4.5 - 15.0 (114.3 - 381)	100,000 (135,581)	7,200 (3,265)	60/227 (3,000/207)	49.50 (1,257)
CLE22000XHT - 100K BACKUP: <b>LOCKJAW™</b> BUCST23000	11.75 - 22.0 (298.4 - 558.8)	11.75 - 23.0 (298.4 - 584.2)	100,000 (135,581)	10,800 (4,898)	60/227 (2,700/186)	54 (1,371)
CLE22000XHT - 150K BACKUP: <b>LOCKJAW™</b> BUCST23000	11.75 - 22.0 (298.4 - 558.8)	11.75 - 23.0 (298.4 - 584.2)	150,000 (203,372)	12,500 (5,669)	60/227 (2,700/186)	54 (1,371)
HD9625 BACKUP: 9625 CAM STYLE BACKUP	3.5 - 9.625 (88.9 - 244.4)	2.375 - 9.625 (60.3 - 244.4)	22,000 (29,827)	1,800 (816)	60/227 (2,500/172)	31 (787)
HD22 - 80K BACKUP: <b>LOCKJAW™</b> BUCS23000	9.625 - 20.0 (244.4 - 508)	6.625 - 23.0 (168.2 - 584.2)	80,000 (108,465)	8,300 (3,764)	60/227 (3,000/207)	55 (1,397)
HD26 - 60K BACKUP: <b>LOCKJAW™</b> BUCST26000	10.75 - 26.0 (273 - 660.4)	13.375 - 26.0 (339.7 - 660.4)	60,000 (81,349)	6,470 (2,943)	60/227 (2,300/158)	55 (1,397)
KT5500 BACKUP: <b>CLINCHER®</b> BUC6250	2.063 - 5.5 (52.4 - 139.7)	2.063 - 6.25 (52.4 - 158.7)	18,700 (25,353)	2,050 (929)	60/227 (2,200/151)	32 (812)
KT8625 BACKUP: <b>CLINCHER®</b> BUC8625	2.375 - 8.625 (60.3 - 219)	2.375 - 8.625 (60.3 - 219)	25,000 (33,895)	2,440 (1,106)	60/227 (2,200/151)	36 (914)
KT13625 BACKUP: 13625 CAM STYLE BACKUP	3.5 - 13.625 (88.9 - 346)	3.5 - 13.625 (88.9 - 346)	35,000 (47,453)	2,450 (1,111)	60/227 (3,000/207)	36 (914)
KT14 - 75K BACKUP: <b>LOCKJAW™</b> BUCS15000	4.5 - 14.375 (114.3 - 365.1)	3.5 - 15.0 (88.9 - 381)	75,000 (101,686)	5,850 (2,655)	60/227 (2,450/168)	45.5 (1,155)
KT20 - 50K BACKUP: <b>LOCKJAW™</b> BUCS21000	9.625 - 20.0 (244.4 - 508)	5.0 - 21.0 (127 - 533.4)	50,000 (67,790)	6,700 (3,039)	60/227 (3,000/207)	52 (1,320)
LW9625 BACKUP: 9625 CAM STYLE BACKUP	3.5 - 9.625 (88.9 - 244.4)	2.375 - 9.625 (60.3 - 244.4)	12,000 (16,268)	1,300 (589)	60/227 (2,500/172)	31 (787)
SL4500 BACKUP: 5" CAM STYLE BACKUP	1.90 - 5.0 (48.2 - 127)	1.90 - 5.0 (48.2 - 127)	8,000 (10,846)	1,000 (453)	50/189 (2,500/172)	24.375 (619)

The above chart is the standard tong and tong with backup models offered by McCoy Global. If any of the above do not meet your requirements, please contact a sales person to discuss which of our additional models not listed above will best suit your needs.

# 3-1/2" HYDRAULIC POWER TONG

## AVAILABLE MODELS

### CLE3500 TUBING TONG

**Size Range:** 1.660" - 3.500"

**Torque Low Gear:** 6,500 ft.lbs. & 26 RPM

**Torque High Gear:** 3,250 ft.lbs. & 55 RPM

All RPM based on 35 GPM Flow Rate

**Weight without backup:** 690 lbs.

**Weight with backup:** 900 lbs.

**Optional Backups:**

**LOCKJAW™** Compression or Tension 4000

**LOCKJAW™** Compression or Tension 4500

### JAWS AND DIES

Wraparound or Dovetail jaws

Low Friction jaws available

Steel, **GRITFACE®** or Aluminum dies

### OPTIONAL ACCESSORIES

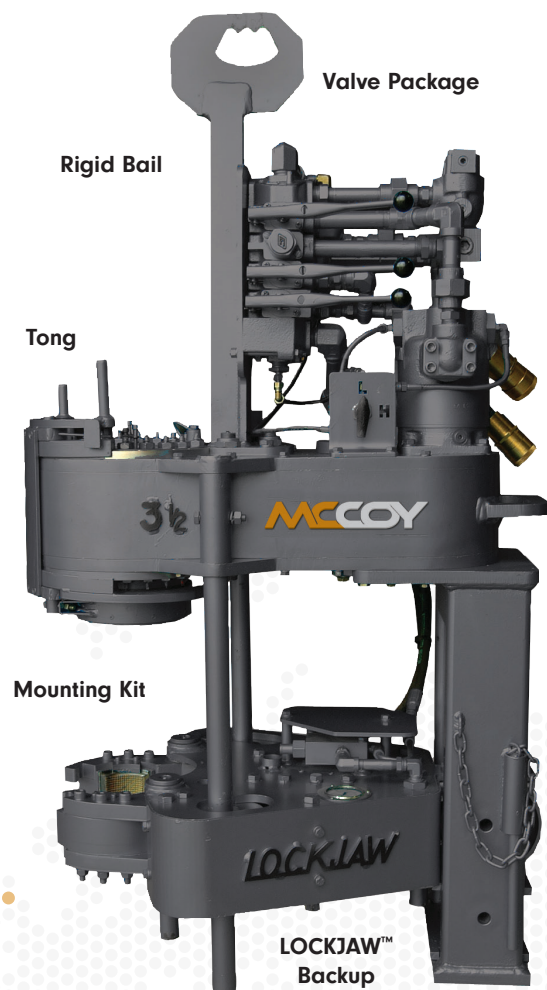
Lift Cylinder

Load Cell/Torque Gauge

Rigid Bail

### SPECIAL FEATURES:

Standard Door Sensor Tong Shutdown



# 4-1/2" HYDRAULIC POWER TONG

## AVAILABLE MODELS

### SL4500 TUBING TONG

**Size Range:** 1.900" - 5.000"

**High Torque Model:**

**Low Gear:** 8,000 ft.lbs. & 38 RPM

**High Gear:** 4,000 ft.lbs. & 77 RPM

All RPM based on 60 GPM Flow Rate

**Weight with backup:** 950 lbs.

**Optional Backups:**

Cam style 5.000" backup

### JAWS AND DIES

Wraparound or Dovetail jaws

Fine Tooth Steel or **GRITFACE®** dies

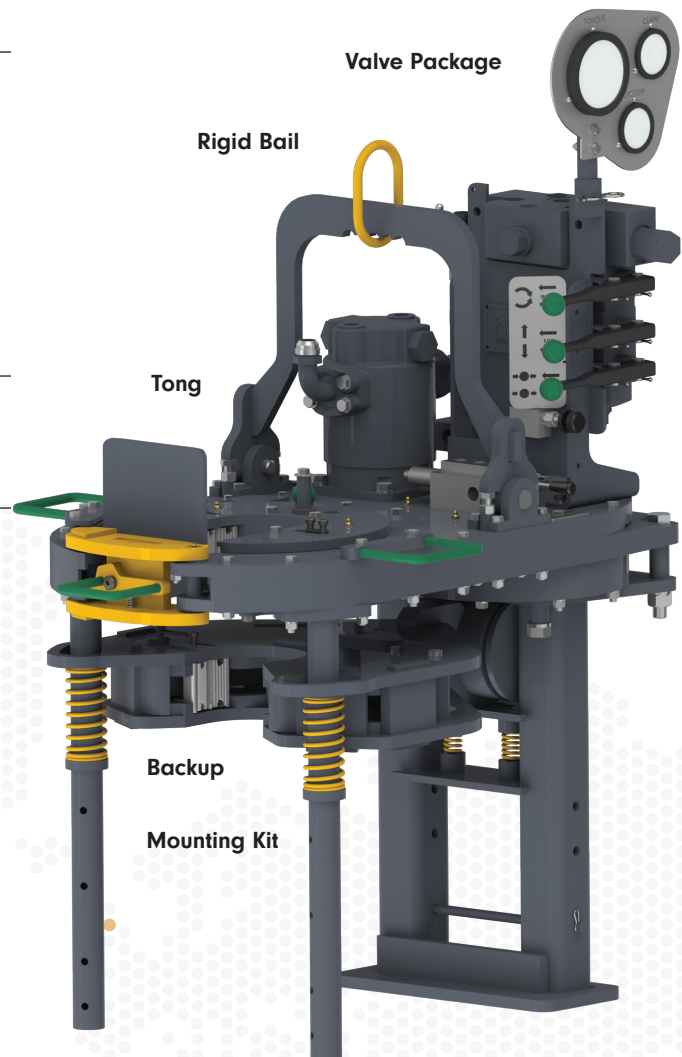
### OPTIONAL ACCESSORIES

Lift Cylinder or Spring Hanger

Load Cell/Torque Gauge

Rigid Bail

Rigid Base



# 5-1/2" HYDRAULIC POWER TONG

## AVAILABLE MODELS

### CLE5500UHT TONG

**Size Range:** 2.063" - 5.500"

**Torque Low Gear:** 25,000 ft.lbs. & 7 RPM

**Torque High Gear:** 4,600 ft.lbs & 40 RPM

All RPM based on 35 GPM Flow Rate

**Weight with backup:** 2,800 lbs.

#### Optional Backups:

Compression or Tension 5500

**LOCKJAW™ DP** Compression or Tension 5500

Compression or Tension 6250

### JAWS AND DIES

Wraparound or Dovetail jaws

Low Friction jaws available

Wraparound or Dovetail dies

Fine Tooth Steel, **GRITFACE®** or Aluminum

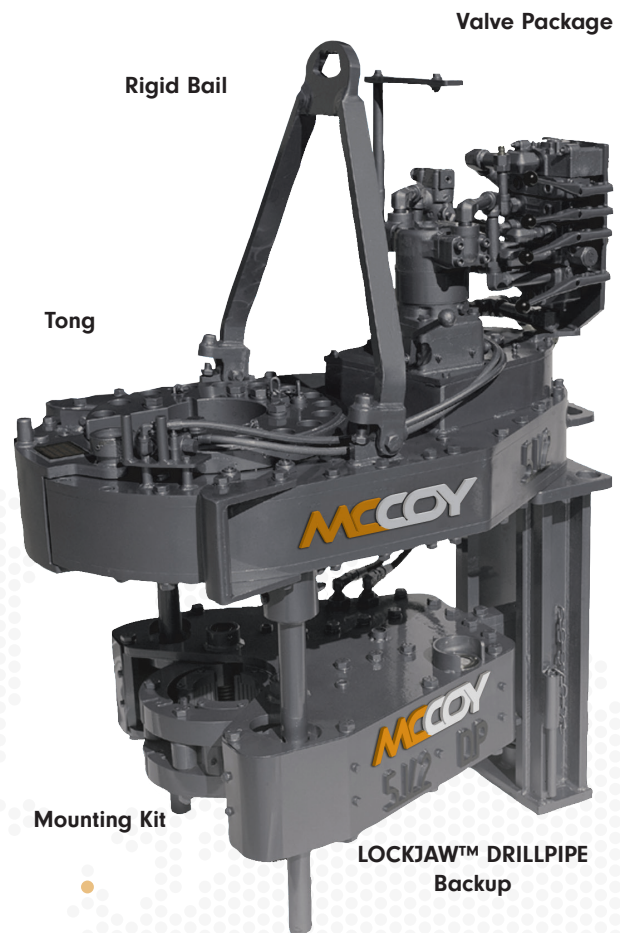
Availability varies by Model Number

### OPTIONAL ACCESSORIES

Lift Cylinder or Spring Hanger

Load Cell/Torque Gauge

Rigid Bail or Chain Bail



# 5-1/2" HYDRAULIC POWER TONG

## AVAILABLE MODELS

### CLE5500XHT<sup>1</sup> COMBINATION CASING/DRILLPIPE TONG

Size Range: 2.063" - 5.500"

Torque Low/Low Gear: 40,000 ft.lbs. & 4 RPM

Torque Low/High Gear: 20,000 ft.lbs. & 8 RPM

Torque High/Low Gear: 10,000 ft.lbs. & 18 RPM

Torque High/High Gear: 5,000 ft.lbs. & 36 RPM

All RPM based on 35 GPM Flow Rate

Weight with backup: 3,500 lbs.

Optional Backups:

XHT Drillpipe 5500

### SPECIAL FEATURES

Very compact footprint for snubbing units

### JAWS AND DIES

Wraparound or Dovetail jaws

Low Friction jaws available

Wraparound or Dovetail dies

Fine Tooth Steel, **GRITFACE®** or Aluminum

Availability varies by Model Number

### OPTIONAL ACCESSORIES

Lift Cylinder or Spring Hanger

Load Cell/Torque Gauge

Rigid Bail

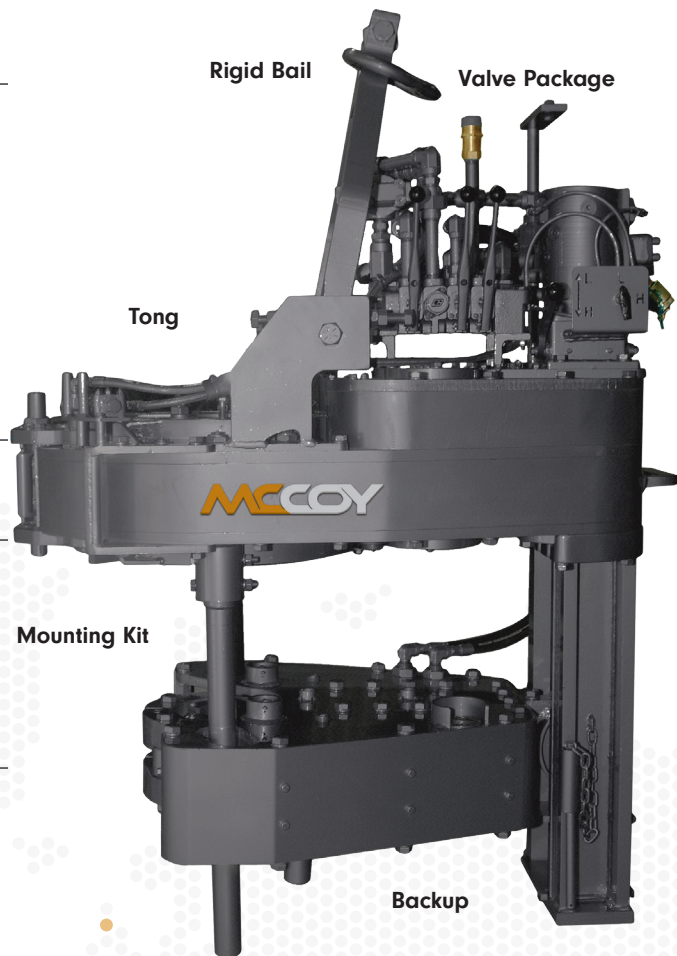


Image is CLE5500XHT with Drillpipe Compression 5500 Backup

<sup>1</sup>CE Marked and Registered for International Use





# 5-1/2" HYDRAULIC POWER TONG

## AVAILABLE MODELS

### KT5500 TUBING TONG

**Size Range:** 2.063" - 5.500"

**Torque Low Gear:** 18,700 ft.lbs. & 16 RPM

**Torque High Gear:** 3,750 ft.lbs. & 81 RPM

All RPM based on 60 GPM Flow Rate

#### **Weights:**

**without backup:** 1,140 lbs.

**with Compression or Tension backup:** 2,025 lbs.

**with Cam style backup:** 1,700 lbs.

#### **Optional Backups:**

Compression or Tension 5500

Compression or Tension 6500

Cam Style 5500

### JAWS AND DIES

Wraparound or Dovetail jaws

Fine Tooth Steel or **GRITFACE®** dies

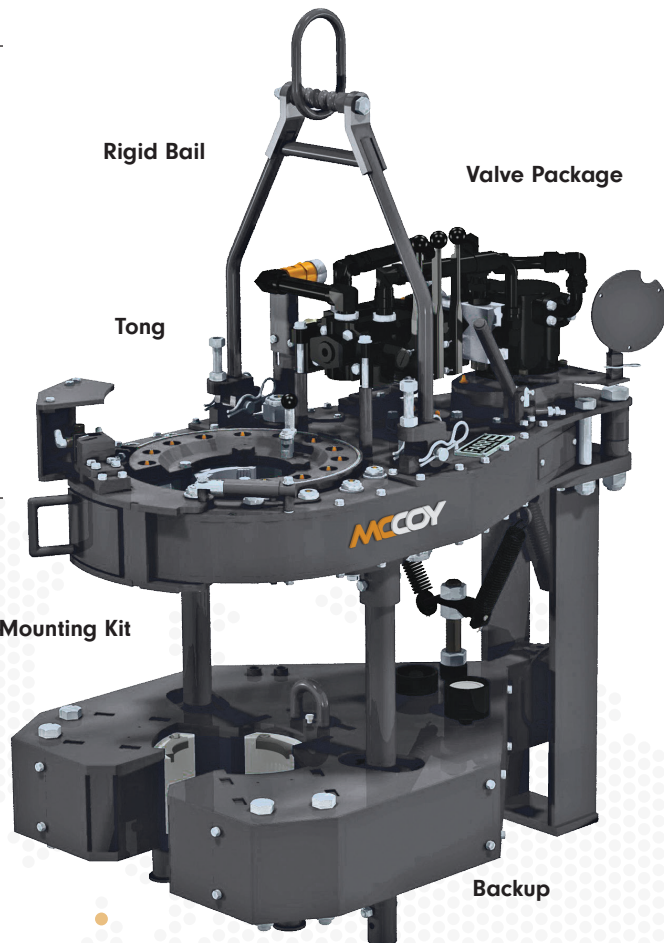
### OPTIONAL ACCESSORIES

Lift Cylinder or Spring Hanger

Load Cell/Torque Gauge

Rigid Bail or Chain Bail

**CHROMEMASTER™**



# 7-5/8" HYDRAULIC POWER TONG

## AVAILABLE MODELS

### CLE7625UHT CASING TONG

**Size Range:** 2.375" - 7.625"

**Torque Low Gear:** 30,000 ft.lbs. & 9 RPM

**Torque High Gear:** 3,500 ft.lbs. & 69 RPM

All RPM based on 65 GPM Flow Rate

**Weight with backup:** 3,500 lbs.

**Optional Backups:**

Compression or Tension 7625

Compression or Tension 8625

### JAWS AND DIES

Wraparound or Dovetail jaws

Low Friction jaws available

Wraparound or Dovetail jaws

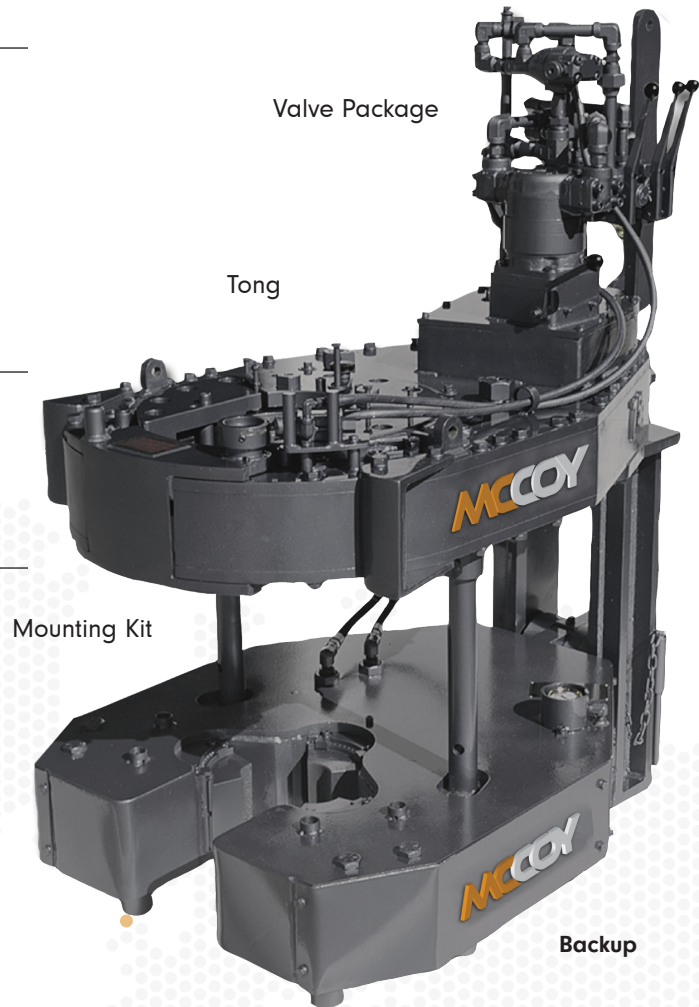
Fine Tooth Steel, **GRITFACE®** or Aluminum

### OPTIONAL ACCESSORIES

Lift Cylinder or Spring Hanger

Load Cell/Torque Gauge

Rigid Bail or Chain Bail



CE Marked and Registered for International Use



# 8-5/8" HYDRAULIC POWER TONG

## AVAILABLE MODELS

### CLE8625 DRILLPIPE TONG

**Size Range:** 2.375" - 8.625"

**Torque Low/Low Gear:** 85,000 ft.lbs. & 3.4 RPM

**Torque Low/High Gear:** 42,500 ft.lbs. & 6.8 RPM

**Torque High/Low Gear:** 15,000 ft.lbs. & 17 RPM

**Torque High/High Gear:** 7,500 ft.lbs. & 33 RPM

All RPM based on 60 GPM Flow Rate

**Weight with backup:** 4,500 lbs.

**Optional Backups:**

LOCKJAW™ Drillpipe 8500

### JAWS AND DIES

Wraparound or Dovetail jaws

Low Friction jaws available

Wraparound or Dovetail jaws

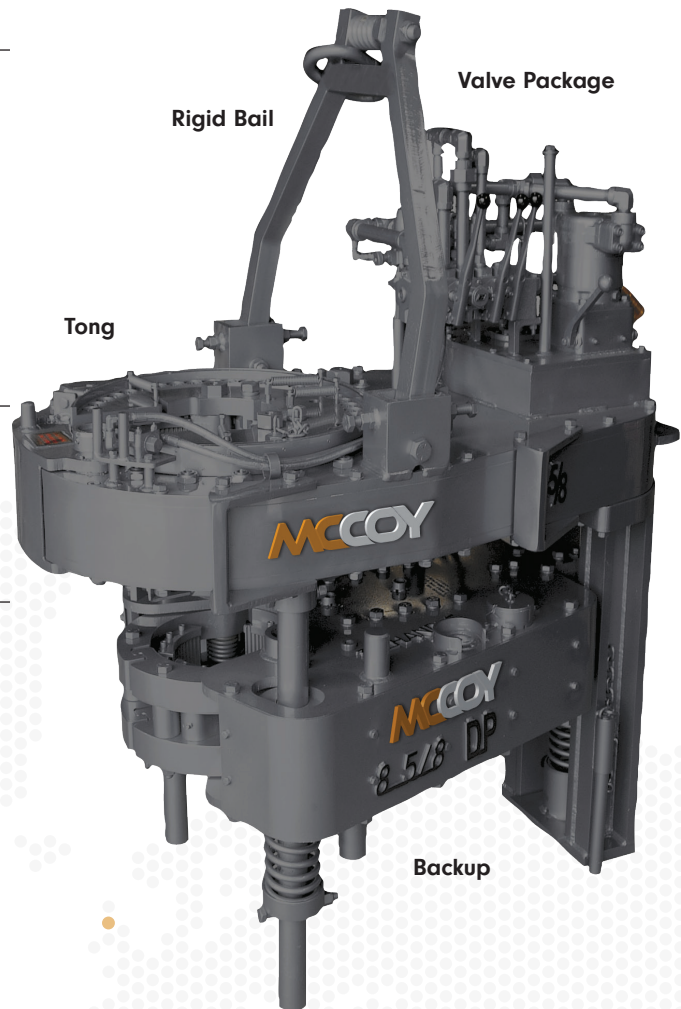
Fine Tooth Steel, GRITFACE® or Aluminum

### OPTIONAL ACCESSORIES

Lift Cylinder or Spring Hanger

Load Cell/Torque Gauge

Rigid Bail or Tong Pusher



CE Marked and Registered for International Use



# 8-5/8" HYDRAULIC POWER TONG

## AVAILABLE MODELS

### KT8625 CASING TONG

**Size Range:** 2.375" - 8.625"

**Torque Low Gear:** 25,000 ft.lbs. & 12 RPM

**Torque High Gear:** 5,000 ft.lbs. & 58 RPM

All RPM based on 60 GPM Flow Rate

**Weight:**

**without backup:** 1,550 lbs.

**with Compression** 2,750 lbs.

**with Cam:** 2,550 lbs.

**with Frame Mounted Wedge:** 4,600 lbs

**Optional Backups:**

Compression 7625

Compression 8625

Cam Style 8625

Frame Mounted Wedge Style 8625

### JAWS AND DIES

Wraparound or Dovetail jaws

Fine Tooth Steel or **GRITFACE®** dies

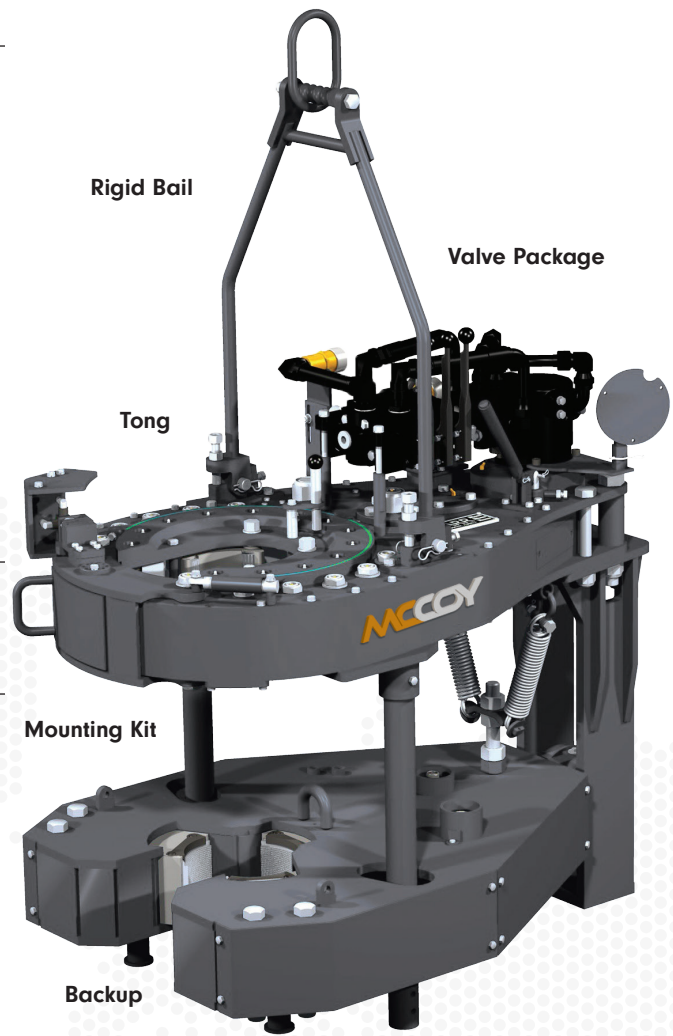
### OPTIONAL ACCESSORIES

Lift Cylinder or Spring Hanger

Load Cell/Torque Gauge

Rigid Bail or Chain Bail

**CHROMEMASTER™**



# 9-5/8" HYDRAULIC POWER TONG

## AVAILABLE MODELS

### HD9625<sup>1</sup> CASING TONG\*

**Size Range:** 3.5" - 9.625"

**Torque Low/Low Gear:** 22,000 ft.lbs. & 14 RPM

**Torque Low/High Gear:** 11,000 ft.lbs. & 28 RPM

**Torque High/Low Gear:** 4,300 ft.lbs. & 71 RPM

**Torque High/High Gear:** 2,200 ft.lbs. & 142 RPM

All RPM based on 60 GPM Flow Rate

**Weight:**

**without backup:** 1,300 lbs.

**with Cam style:** 1,800 lbs.

**Optional Backups:**

Cam style 9625

### LW9625 CASING TONG

**Size Range:** 2.375" - 9.625"

**Torque Low Gear:** 12,000 ft.lbs. & 19 RPM

**Torque High Gear:** 2,500 ft.lbs. & 94 RPM

All RPM based on 60 GPM Flow Rate

### JAWS AND DIES

Wraparound or Dovetail jaws

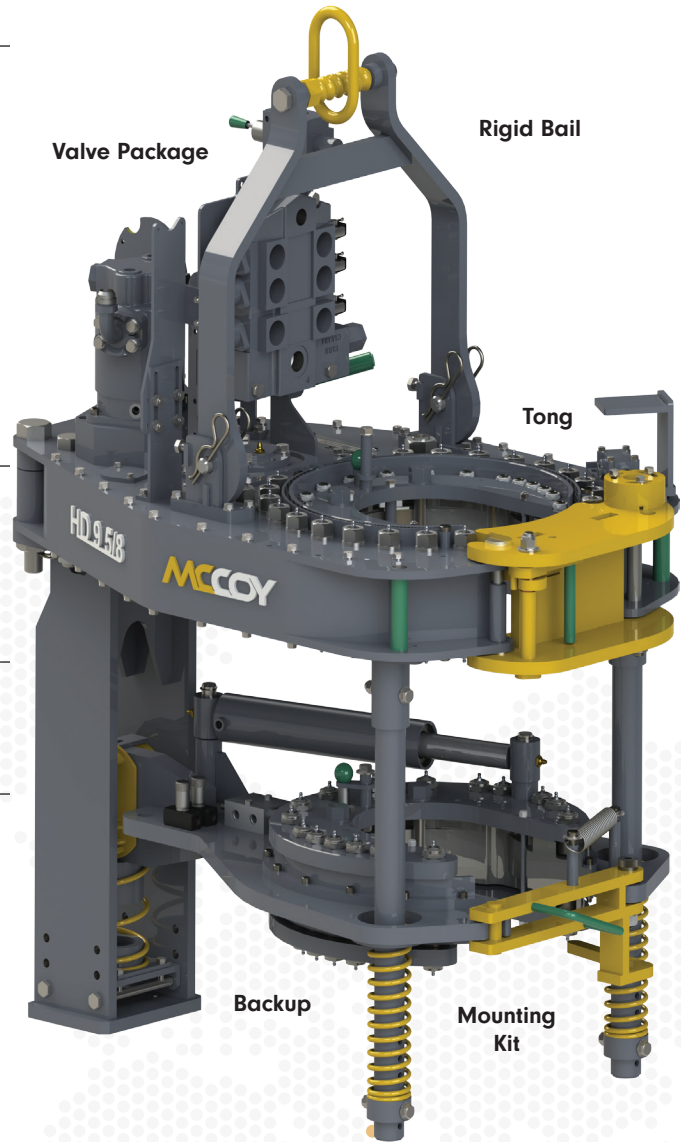
Fine Tooth Steel and **GRITFACE®** dies

### OPTIONAL ACCESSORIES

Lift Cylinder or Spring Hanger

Load Cell/Torque Gauge

Rigid Bail



\*The HD9625 Casing Tong is an enhanced version of our KT9625 tong that provides higher torque and speed while still providing a smaller rig footprint.

<sup>1</sup>CE Marked and Registered for International Use

# 13-5/8" HYDRAULIC POWER TONG

## AVAILABLE MODELS

### KT13625 CASING TONG

**Size Range:** 3.500" - 13.625"

**Torque Low Gear:** 35,000 ft.lbs. & 10 RPM

**Torque High Gear:** 7,000 ft.lbs & 48 RPM

All RPM based on 60 GPM Flow Rate

**Weight:**

**without backup:** 1,790 lbs.

**with Cam:** 2,450 lbs.

**Optional Backups:**

Cam Style 13625

### JAWS AND DIES

Wraparound or Dovetail jaws

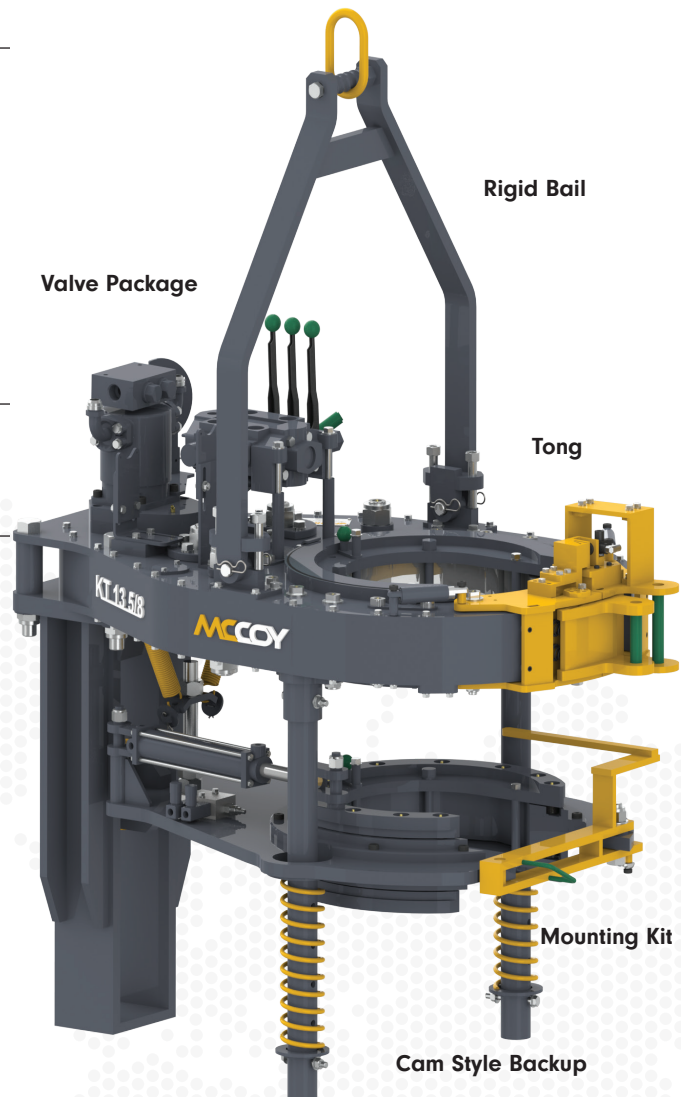
Fine Tooth Steel & **GRITFACE®** dies

### OPTIONAL ACCESSORIES

Lift Cylinder or Spring Hanger

Load Cell/Torque Gauge

Rigid Bail or Chain Bail



CE Marked and Registered for International Use



# 14" HYDRAULIC POWER TONG

## AVAILABLE MODELS

### CLE14000UHT CASING TONG

**Size Range:** 4.500" - 14.000"

**Torque Low Gear:** 50,000 ft.lbs.\* & 5 RPM

**Torque High Gear:** 7,000 ft.lbs. & 36 RPM

\*Also available in 40,000 ft.lbs.

All RPM based on 60 GPM Flow Rate

**Weight with backup:** 5,700 lbs.

**Optional Backups:**

Compression or Tension 15000

### JAWS AND DIES

Wraparound or Dovetail jaws

Low Friction jaws available

Wraparound or Dovetail dies

Fine Tooth Steel, **GRITFACE®** or Aluminum

### CLE14000 DRILLPIPE TONG

**Size Range:** 4.500" - 14.375"

**Torque Low/Low Gear:** 100,000 ft.lbs.\* & 2.6 RPM

**Torque Low/High Gear:** 50,000 ft.lbs. & 5.1 RPM

**Torque High/Low Gear:** 25,000 ft.lbs. & 14 RPM

**Torque High/High Gear:** 9,000 ft.lbs. & 28 RPM

\*Also available in 80,000 ft.lbs.

All RPM based on 60 GPM Flow Rate

**Weight with backup:** 7,200 lbs.

**Optional Backups:**

**LOCKJAW™** Compression or Tension 15000

### OPTIONAL ACCESSORIES

Lift Cylinder or Spring Hanger

Load Cell/Torque Gauge

Rigid Bail or Chain Bail

### SPECIAL FEATURES OF CLE14000 DRILLPIPE TONG

This is a Combination Casing/Drillpipe tong that can run casing using pivoting jaws or accept an insert that allows them to use sliding jaws, allowing for flexibility of use and cutting down on needed rig equipment.

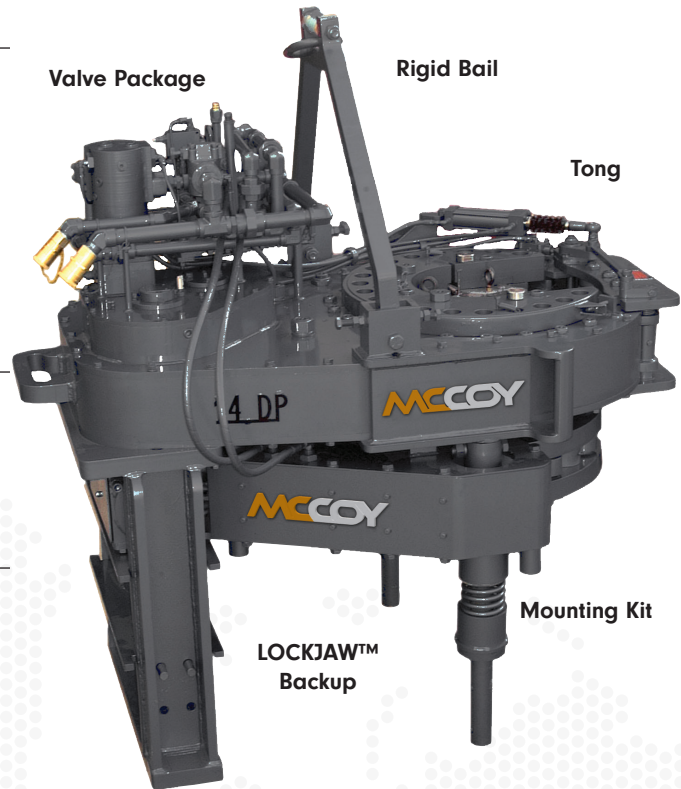


Image is CLE14000DP

CE Marked and Registered for International Use



# 14" HYDRAULIC POWER TONG

## AVAILABLE MODELS

### KT14000 CASING TONG

**Size Range:** 4.500 - 14.375"

**Torque Low Gear:** 75,000 ft.lbs. & 4.4 RPM

**Torque High Gear:** 14,824 ft.lbs. & 23.8 RPM

All RPM based on 60 GPM Flow Rate

**Weight:**

**without backup:** 3,350 lbs.

**with LOCKJAW™:** 5,850 lbs.

**Optional Backups:**

**LOCKJAW™ 15000**

### JAWS AND DIES

Dovetail jaws

Fine Tooth Steel & **GRITFACE®** dies

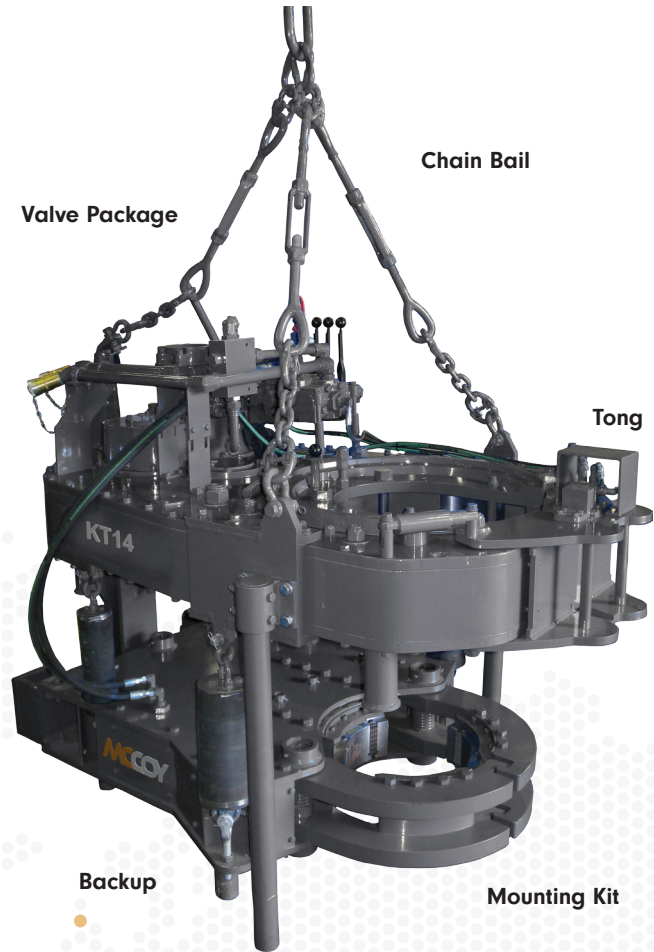
### OPTIONAL ACCESSORIES

**CHROMEMASTER™** CM15000 - 75,000 ft.lbs.

Lift Cylinder or Spring Hanger

Load Cell/Torque Gauge

Rigid Bail or Chain Bail





# 20" HYDRAULIC POWER TONG

## AVAILABLE MODELS

### KT20000<sup>1</sup> CASING TONG

**Size Range:** 7.000" - 20.000"

**Torque Low Gear:** 50,000 ft.lbs. & 7 RPM

**Torque High Gear:** 7,700 ft.lbs. & 49 RPM

All RPM based on 60 GPM Flow Rate

**Weight:**

**without backup:** 3,400 lbs.

**with Frame Mounted Wedge:** 6,700 lbs.

**Optional Backups:**

Frame Mounted Wedge 20000

LOCKJAW™ 21000

### JAWS AND DIES

Dovetail jaws

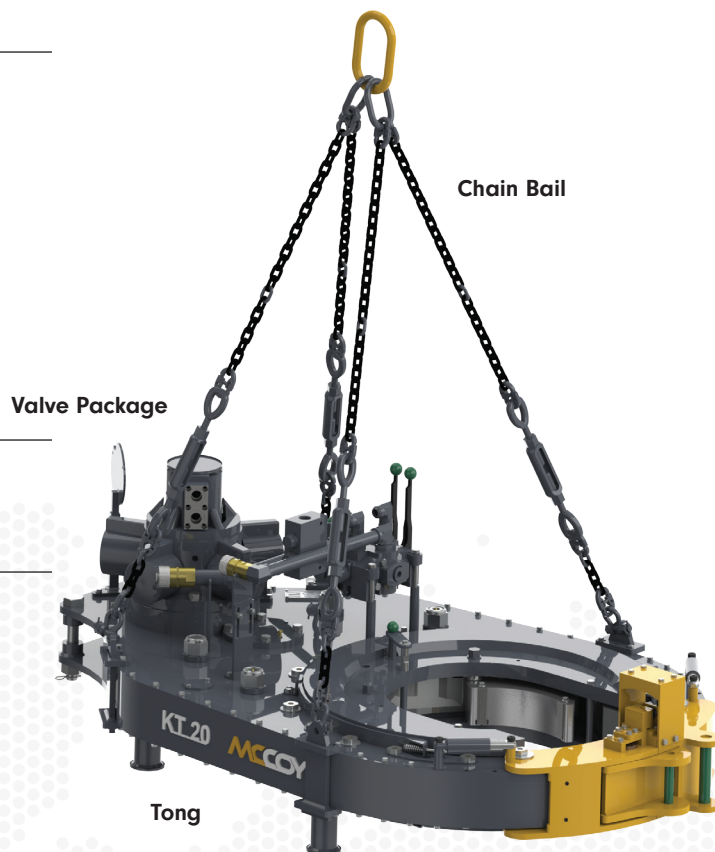
Fine Tooth Steel and GRITFACE® dies

### OPTIONAL ACCESSORIES

Lift Cylinder or Spring Hanger

Load Cell/Torque Gauge

Rigid Bail or Chain Bail



<sup>1</sup>CE Marked and Registered for International Use



# 22" HYDRAULIC POWER TONG

## AVAILABLE MODELS

### CLE22000XHT CASING TONG

**Size Range:** 7.000" - 22.000"

**Torque Low/Low Gear:** 150,000 ft.lbs.\* & 1.8 RPM

**Torque Low/High Gear:** 70,000 ft.lbs. & 3.6 RPM

**Torque High/Low Gear:** 28,000 ft.lbs. & 10 RPM

**Torque High/High Gear:** 13,000 ft.lbs. & 14 RPM

\*Also available in 100,000 ft.lbs.

All RPM based on 60 GPM Flow Rate

**Weight with backup:** 12,500 lbs.

**Optional Backups:**

**LOCKJAW™** Tension 23000

### JAWS AND DIES

Dovetail jaws

Low Friction jaws available

Dovetail dies

### OPTIONAL ACCESSORIES

Lift Cylinder or Spring Hanger

Load Cell/Torque Gauge

Rigid Bail



Image is CLE22000XHT (150K) on BUCS23000 LOCKJAW™ backup

# 22" HYDRAULIC POWER TONG

## AVAILABLE MODELS

### HD22000 CASING TONG

**Size Range:** 7.000" - 22.000"

**Torque Low Gear:** 80,000 ft.lbs. & 4 RPM

**Torque High Gear:** 8,800 ft.lbs. & 32 RPM

All RPM based on 60 GPM Flow Rate

**Weight without backup:** 4,300 lbs.

**Optional Backups:**

**LOCKJAW™** 21000

Frame Mounted Wedge 20000

### JAWS AND DIES

Dovetail jaws

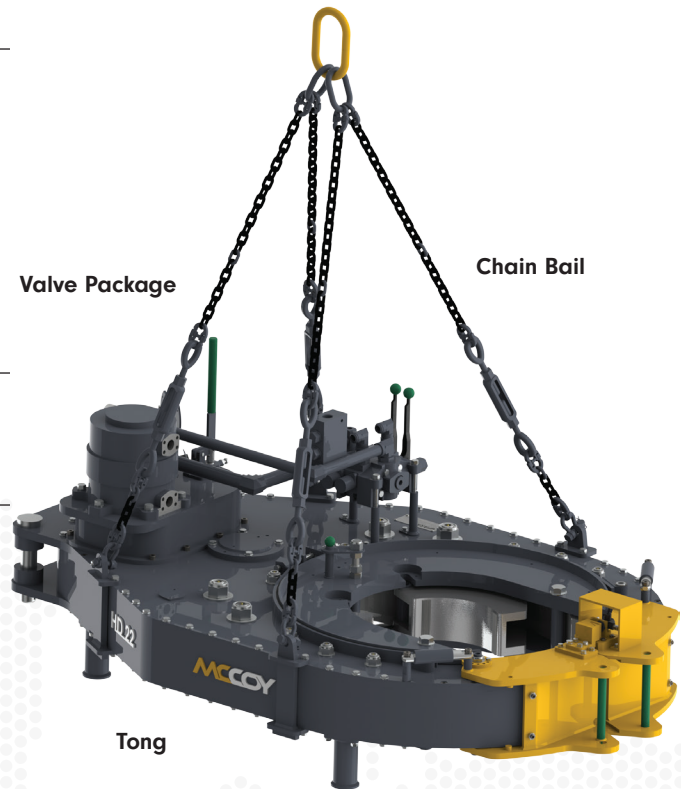
Fine Tooth Steel and **GRITFACE®** dies

### OPTIONAL ACCESSORIES

Lift Cylinder or Spring Hanger

Load Cell/Torque Gauge

Rigid Bail or Chain Bail



# 26" HYDRAULIC POWER TONG

## AVAILABLE MODELS

### HD26000 CASING TONG

**Size Range:** 10.750" - 26.000"

**Torque Low Gear:** 60,000 ft.lbs. & 5 RPM

**Torque High Gear:** 9,000 ft.lbs & 30 RPM

All RPM based on 60 GPM Flow Rate

**Weight:**

**without backup:** 3,750 lbs.

**with Frame Mounted Wedge:** 7,200 lbs.

**Optional Backups:**

**LOCKJAW™ 25000**

Frame Mounted Wedge 25000

### JAWS AND DIES

Dovetail jaws

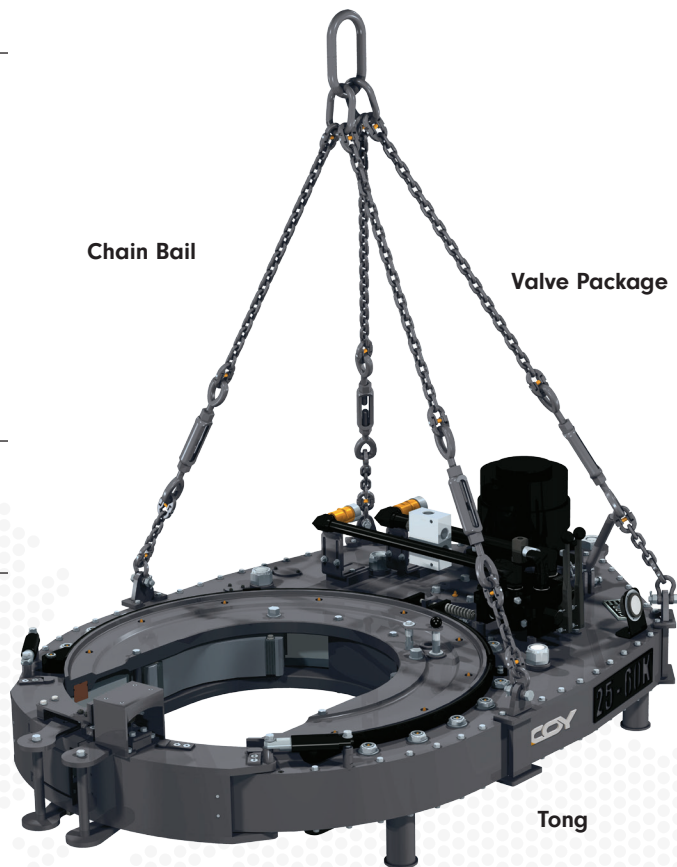
Fine Tooth Steel and **GRITFACE®** dies

### OPTIONAL ACCESSORIES

Lift Cylinder or Spring Hanger

Load Cell/Torque Gauge

Rigid Bail or Chain Bail



# 31" HYDRAULIC POWER TONG

## AVAILABLE MODELS

### HD31000 CASING TONG

---

**Size Range:** 10.750" - 31.000"

**Torque Low Gear:** 80,000 ft.lbs. and 6 RPM

**Torque High Gear:** 38,600 ft.lbs and 12 RPM

All RPM based on 60 GPM Flow Rate

**Weight:** 6,800 lb.

### JAWS AND DIES

---

Dovetail jaws

Fine Tooth Steel and **GRITFACE®** dies

### OPTIONAL ACCESSORIES

---

Lift Cylinder or Spring Hanger

Load Cell/Torque Gauge

Rigid Bail or Chain Bail



# BUCKING UNIT SELECTION CHART

BUCKING UNIT MODEL NUMBER	MAX TORQUE FT. LBS. (Nm)	SIZE RANGE INCHES (mm)	WEIGHT (APPROX)** LBS (Kg)
CONTINUOUS BUCKING UNITS - SHORT STROKE			
CLEBU1175MSS-35	35,000 (47,453)	2.063 - 11.75 (52.4 - 298.4)	9,800 (4,445)
CLEBU1175MSS-50	50,000 (67,790)	2.063 - 11.75 (52.4 - 298.4)	9,800 (4,445)
CLEBU1500-30	50,000 (67,790)	2.063 - 15.0 (52.4 - 381)	13,800 (6,259)
CLEBU1500-32	100,000 (135,581)	2.063 - 15.0 (52.4 - 381)	13,800 (6,259)
CLEBU2300-31	100,000 (135,581)	2.375 - 23.0 (60.3 - 584.2)	18,000 (6,259)
CONTINUOUS BUCKING UNITS - LONG STROKE			
RP2109	10,000 (13,558)	1.600 - 9.0 (40.6 - 228.6)	4,500 (2,041)
RP6012	50,000 (67,790)	2.375 - 12.25 (60.3 - 311.1)	7,000 (3,175)
RP6016	50,000 (67,790)	2.375 - 16.0 (60.3 - 406.4)	7,000 (3,175)
RP6512	35,000 (47,453)	2.375 - 12.25 (60.3 - 311.1)	6,350 (2,880)
RP7012	105,000 (142,360)	3.50 - 12.25* (88.9 - 311.1)	18,000 (8,164)
RP7018	105,000 (142,630)	3.50 - 17.4* (88.9 - 441.9)	18,000 (8,164)
RP7022	105,000 (142,360)	3.50 - 21.5* (88.9 - 546.1)	18,000 (8,164)
MAKE/BREAK UNITS			
RP3014	160,000; 190,000 (216,930; 257,605)	3.5 - 13.5* (88.9 - 342.9)	8,350 (3,787)
RP3514	160,000; 190,000 (216,930; 257,605)	HEADSTOCK 3.5 - 13.5* (88.9 - 342.9) TAILSTOCK 3.5 - 17.5* (88.9 - 444.5)	9,200 (4,173)
RP4009	50,000; 70,000 (67,790; 94,907)	2.5 - 8.5 (63.5 - 215.9)	4,350 (1,973)

\*Requires 1" reducer dies to go below 3.50"

\*\* Weights are approximate and can vary depending on bed length and accessories.



# BUCKING UNITS

## CONTINUOUS SHORT STROKE

### AVAILABLE MODELS

#### CLEBU1175MSS-35

**Size Range:** 2.063" - 11.750"

**Torque Low Gear:** 35,000 ft.lbs.\* & 9 RPM

**Torque High Gear:** 17,500 ft.lbs. & 18 RPM

**Weight:** 9,800 lbs.

#### CLEBU1175MSS-50

**Size Range:** 2.063" - 11.750"

**Torque Low Gear:** 50,000 ft.lbs.\* & 9 RPM

**Torque High Gear:** 17,500 ft.lbs. & 18 RPM

**Weight:** 9,800 lbs.

#### CLEBU1500-30

**Size Range:** 2.063" - 15.000"

**Torque Low Gear:** 50,000 ft.lbs.\* & 6 RPM

**Torque High Gear:** 25,000 ft.lbs. & 12 RPM

**Weight:** 13,800 lbs.

#### CLEBU1500-32

**Size Range:** 2.063" - 15.000"

**Torque Low Gear:** 100,000 ft.lbs.\* & 6 RPM

**Torque High Gear:** 25,000 ft.lbs. & 12 RPM

**Weight:** 13,800 lbs.

#### CLEBU2300-31

**Size Range:** 2.375" - 23.000"

**Torque Low Gear:** 100,000 ft.lbs.\* & 6 RPM

**Torque High Gear:** 25,000 ft.lbs. & 12 RPM

**Weight:** 18,000 lbs.

#### DIES

Wraparound Fine Tooth Steel, **GRITFACE®** and Aluminum

#### OPTIONAL ACCESSORIES

**WINCATT®** Torque/Turn Management System

Power Rollers

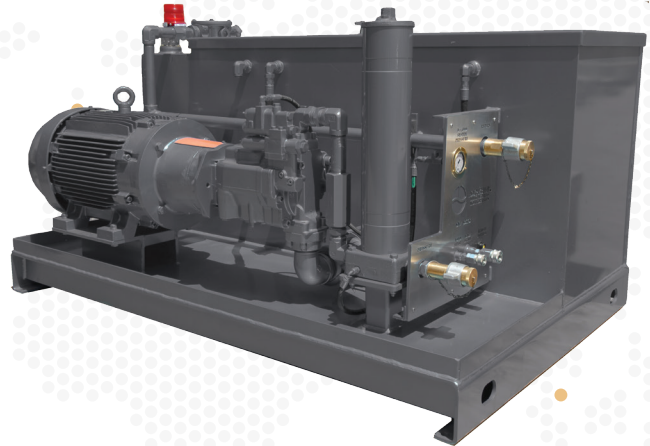
Hydraulic Jack Stands

Elevation Control Systems

**Note:** weights are approximate and can vary depending on bed length and accessories.



CLEBU23000 with Console and Power Unit

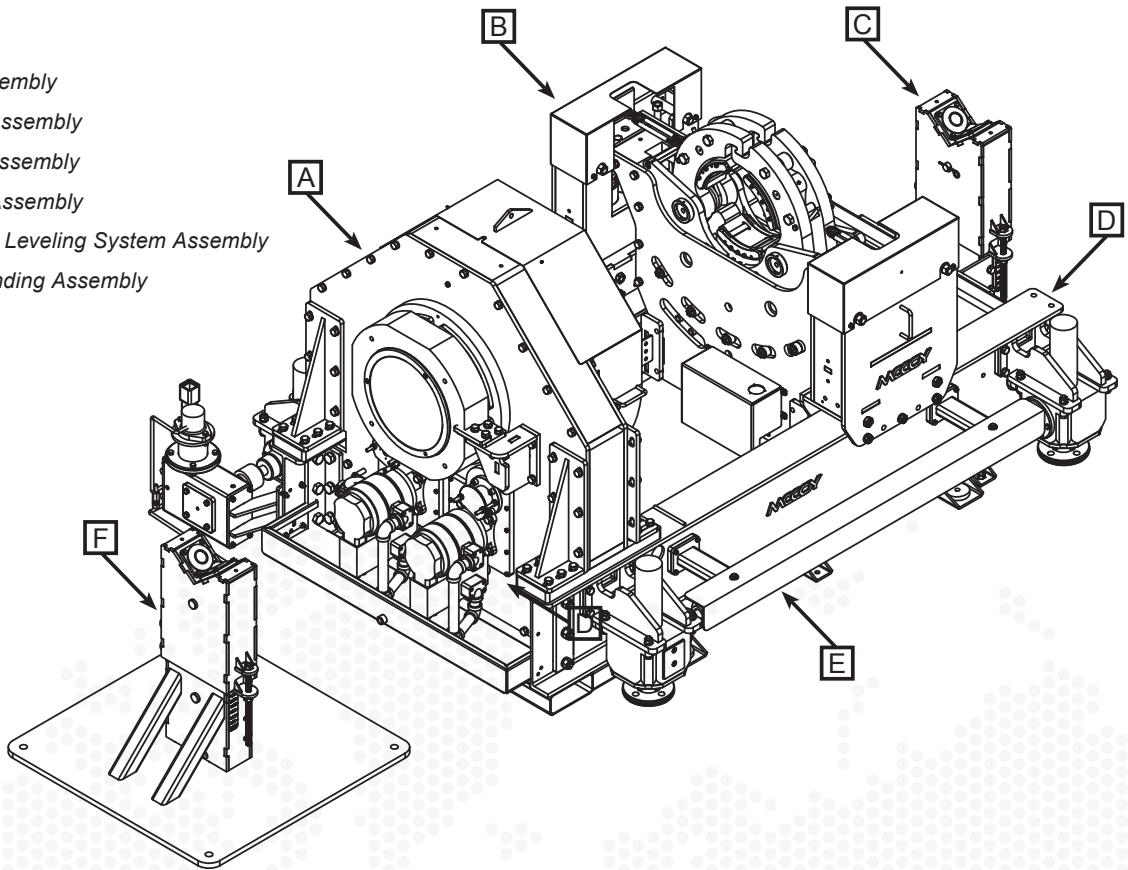


# BUCKING UNITS

## CONTINUOUS SHORT STROKE

### LINE DRAWING WITH ACCESSORIES

- A** Tong Assembly
- B** Backup Assembly
- C** Bolt-on Assembly
- D** 10' Bed Assembly
- E** Hydraulic Leveling System Assembly
- F** Free Standing Assembly





# BUCKING UNITS

## CONTINUOUS LONG STROKE

### RP2100 SERIES AVAILABLE MODELS

#### RP2109

**Size Range:** 1.60" - 9.000"

**Torque Capacity Make:** 10,000 ft.lbs.

**Weight (approx):** 4,500 lbs.

### RP6000 SERIES AVAILABLE MODELS

#### RP6012

**Size Range:** 2.375" - 12.25"

**Torque Capacity Make/Break:** 50,000 ft.lbs.

**Weight (approx):** 7,000 lbs.

#### RP6016

**Size Range:** 2.375" - 16.0"

**Torque Capacity Make/Break:** 50,000 ft.lbs.

**Weight (approx):** 7,000 lbs.

### RP6500 SERIES AVAILABLE MODELS

#### RP6512

**Size Range:** 2.375" - 12.25"

**Torque Capacity Make/Break:** 35,000 ft.lbs.

**Weight (approx):** 6,350

### RP7000 SERIES AVAILABLE MODELS

#### RP7012

**Size Range:** 3.50" - 12.25"\*

**Torque Capacity Make/Break:** 105,000 ft.lbs.

**Weight (approx):** 18,000 lbs.

#### RP7018

**Size Range:** 3.50" - 17.40"\*

**Torque Capacity Make/Break:** 105,000 ft.lbs.

**Weight (approx):** 18,000 lbs.

#### RP7022

**Size Range:** 3.50" - 21.50"\*

**Torque Capacity Make/Break:** 105,000 ft.lbs.

**Weight (approx):** 18,000 lbs.

\*Requires 1" reducer dies to go below 3.50"

**Note:** weights are approximate and can vary depending on bed length and accessories.

### OPTIONAL EQUIPMENT

WINCATT® torque/turn management system

6' - 20' beam extensions

Hydraulic Support Stands

Push-Pull Assemblies

Floor Mounted Vise Assemblies



RP7018

# BUCKING UNITS

## CONTINUOUS LONG STROKE

### LINE DRAWING WITH ACCESSORIES

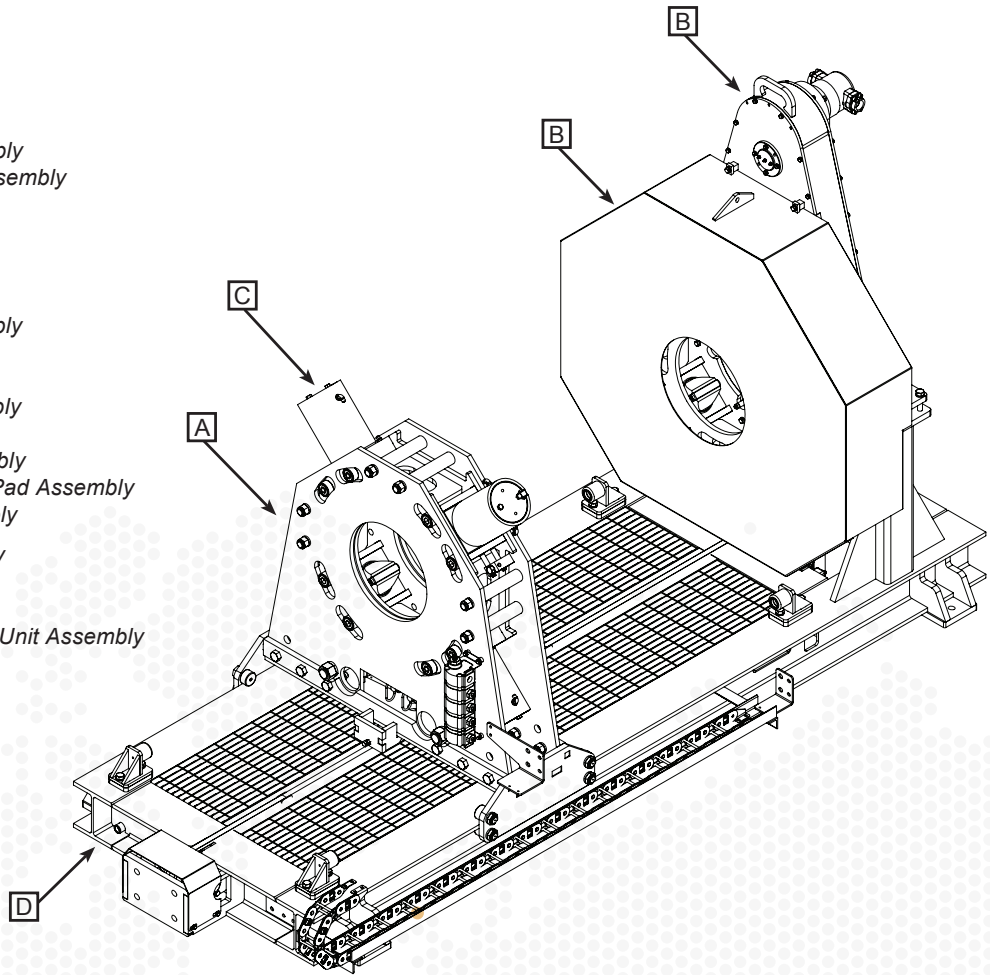
- A** Tail Stock Assembly
  - Tail Stock Vise Assembly
  - Tail Stock Carriage Assembly

- B** Head Stock Assembly
  - Tong Assembly
  - Clutch Gear Assembly
  - Pinon Gear Assembly
  - Outer Manifold Assembly
  - Drive Gear Assembly
  - Headstock Assembly
  - Hub Extension Assembly
  - Swivel Assembly
  - Swivel Support Assembly
  - Swivel Keeper Mount Pad Assembly
  - Swivel Keeper Assembly

- C** Clamp Cylinder Assembly

- D** 12 ft. Skid Assembly

- E** Control Console / Power Unit Assembly



# MAKE/BREAK UNITS

## RP3000 SERIES AVAILABLE MODELS

### RP3014

**Size Range:** 3.50" - 13.50"\*

**Torque Capacity Make:** 160,000 ft.lbs.

**Torque Capacity Break:** 190,000 ft.lbs.

**Weight (approx):** 8,350 lbs.

## RP3500 SERIES AVAILABLE MODELS

### RP3514

**Size Range Headstock:** 3.50" - 13.50"\*

**Size Range Tailstock:** 3.5" - 17.50"\*

**Torque Capacity Make:** 160,000 ft.lbs.

**Torque Capacity Break:** 190,000 ft.lbs.

**Weight (approx):** 9,200 lbs.

## RP4000 SERIES AVAILABLE MODELS

### RP4009

**Size Range:** 2.50" - 8.50"

**Torque Capacity Make:** 50,000 ft.lbs.

**Torque Capacity Break:** 70,000 ft.lbs.

**Weight (approx):** 4,350 lbs.

\*Requires 1" reducer dies to go below 3.50"

**Note:** weights are approximate and can vary depending on bed length and accessories.

## OPTIONAL EQUIPMENT

WINCATT® torque/turn management system

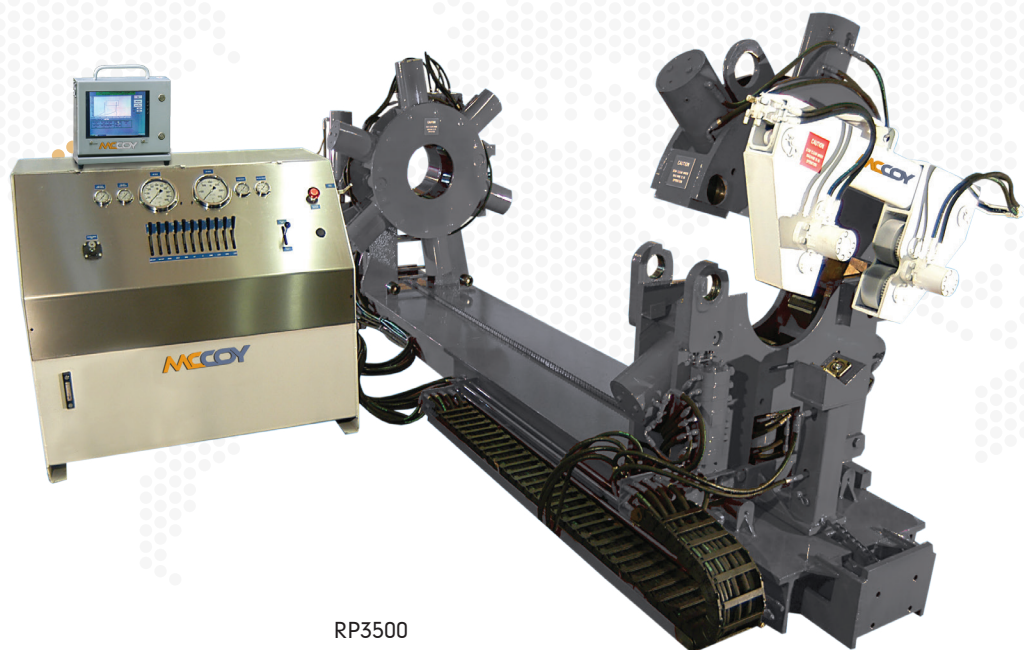
6' - 20' beam extensions

Hydraulic Support Stands

Push-Pull Assemblies

Floor Mounted Vise Assemblies

Hydraulic Pipe Spinner

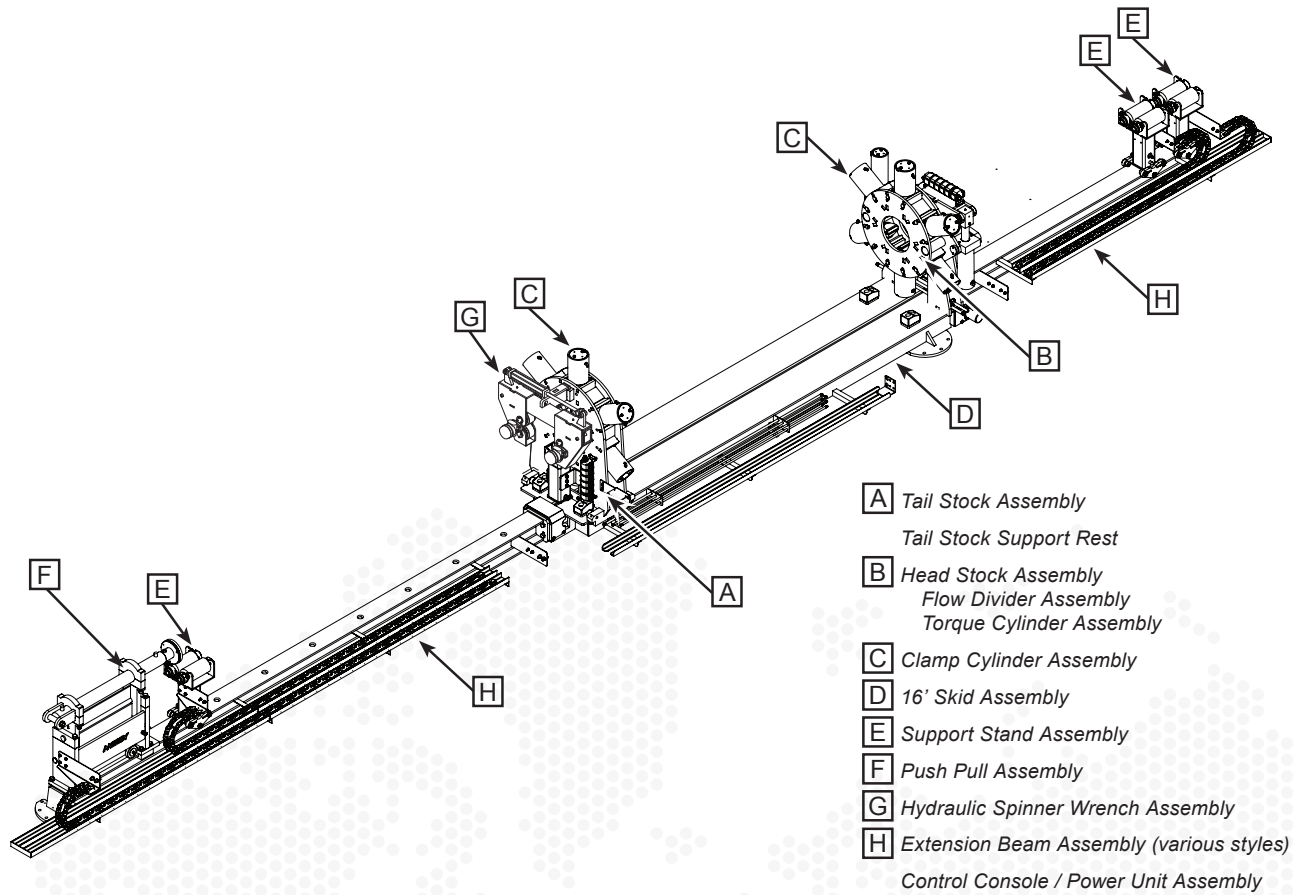


RP3500



# MAKE/BREAK UNITS

## LINE DRAWING WITH ACCESSORIES



# WINCATT®

## TORQUE/TURN MONITORING SYSTEM

### NEWEST FEATURES OF WINCATT®7:

- Laptop running Windows 8
- **WINCATT®7** software
- Option to integrate with **WINCATT®8 (weCATT™)** software and hardware
- Touch screen
- Built-in "one step" reporting system
- Pipe connection library
- Shoulder slope calculation
- Multi-joint review, graphic overlay
- Custom zoom feature
- Program configuration in Tong or Bucking Unit mode

### FUNCTIONS:

- Monitors torque, turns and rotation speed during make-up
- Controls based on final torque or final turns. Includes calibration management system
- Includes automatic "Start Recording" and "Dump Valve Release"
- Includes automatic descriptive comments with optional override
- Option to accept or reject connection on delta turn
- Easy graphical report creation and printing of reports with one button
- Controls speed during make-up (optional)
- Available with optional pressure test system
- View multiple joints in makeup screen
- Features multiple language capabilities

### ANALYZES MAKE-UP TO DETERMINE:

Conformance with thread manufacturer's specification  
Shouldering point for premium connections  
Shouldering time, delta torque, delta turns  
Reviews results from previous make-ups

### SPECIFICATIONS:

**Computer:** Laptop running Windows 8 in stainless steel enclosure  
**Sampling Frequency:** User defined from 1 to 8,000 Hz  
**Recording Frequency:** Based on delta torque and user defined delta time  
**Response Time:** Electronics: < 0.5 ms  
**Hydraulic dump valve:** typical 10 to 30 ms  
**Final Torque:** Average = Optimum torque +/- 1%  
**Operating Temperature:** 40° to 122°F (computer); 22° to 170°F (junction box)  
**Torque Accuracy:** Typically <1%  
**Turns Accuracy:** +/- 1 pulse of turns counter  
**Pressure Accuracy:** Typically <1%  
**ATEX Certified Units:**

Used for hazardous and non-hazardous locations



**WINCATT® Ex** is ATEX certified for ATEX Category 2.

**Suitable for:**

Hazardous Locations

Apparatus Group II

Gas Group IIB

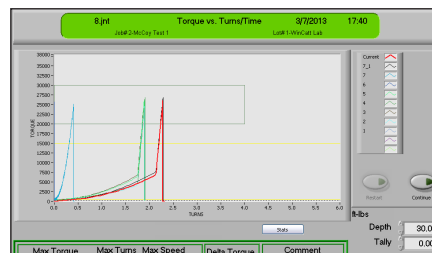
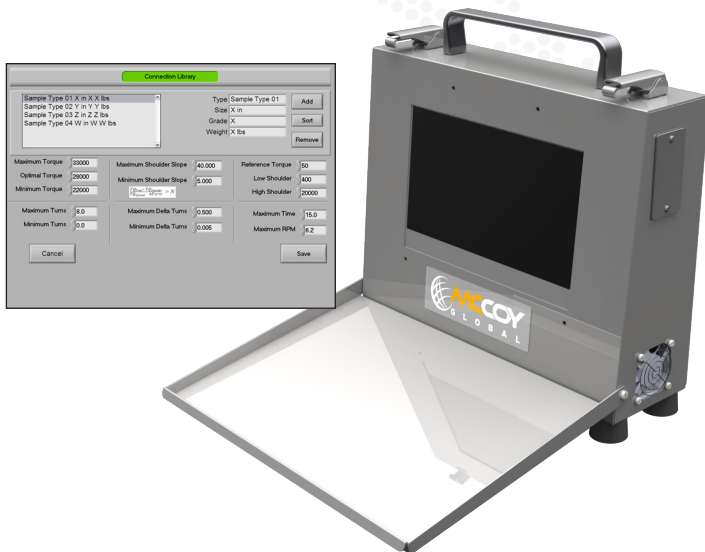
T Class T4

T Ambient -4° to 122°F

CE 0518 Certified

**Pressurized Enclosure Type:** PE2E266

Comes with Air Filter Assembly

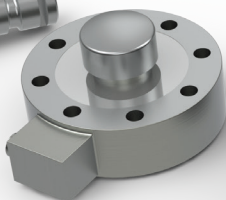


# LOAD CELLS, LIFT CYLINDER, SPRING HANGER

Pin Style Load Cell



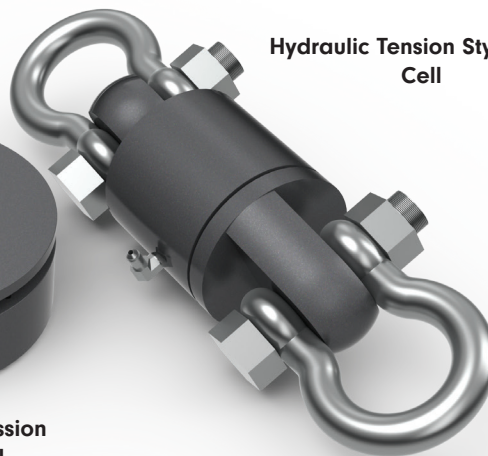
Electronic Compression Style Load Cell



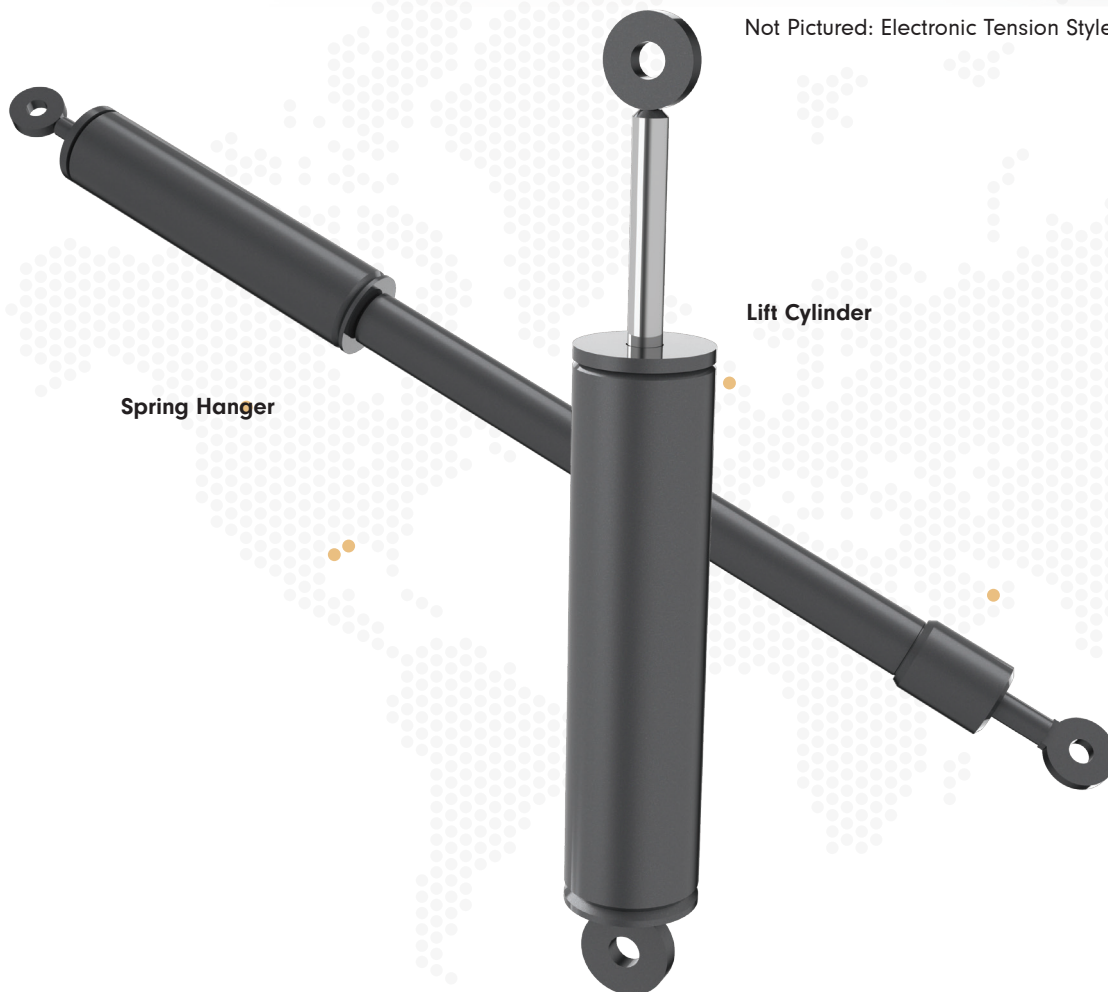
Hydraulic Compression Style Load Cell



Hydraulic Tension Style Load Cell



Not Pictured: Electronic Tension Style Load Cell



Spring Hanger

Lift Cylinder



# CHROMEMASTER™

The **CHROMEMASTER™** is an accessory that converts a power tong into a tong capable of running CRA tubulars using non-marking aluminum or **GRITFACE®** wraparound dies. **CHROMEMASTER™** features 3 or 4 jaws which center and securely grip the pipe using high forces required for high torque applications while supporting the tubulars to guard against deformation. All **CHROMEMASTER™** feature a manually operated pressure intensifier system. Operators can easily regulate clamping pressures to allow non-marking make-up of thin-walled, low strength or expandable tubular goods.

CHROMEMASTER™ SPECIFICATIONS			
MODEL NUMBER	MAXIMUM TUBULAR SIZE	MAXIMUM TORQUE RATING	TONG MODEL NUMBER
CM5500	5.500"	25,000 FT.LBS.	CLE5500UHT; KT5500
CM7625 <sup>1</sup>	7.625"	30,000 FT.LBS.	CLE7625UHT; KT8625
CM15000	15.00"	50,000 FT.LBS.	CLE14000
CM15000	15.00"	75,000 FT.LBS.	KT14000



Image is CM7625

\*Some tools require special or modified backups featuring aluminum dies.  
<sup>1</sup>CE Marked and Registered for International Use



# RP VISE

The RP Vise is a top loading floor mounted hydraulic power vise that grips 3.500" to 11.000" OD oilfield tools and tubulars, useful both in a shop and on a rig floor. It can be used as a repair tool in shops to set and modify equipment, as well as handle and disassemble small tools. The Vise can also be used on a rig floor in downhole assembly to preassemble or disassemble connections.

## SPECIFICATIONS:

- Has a hydraulically actuated leaf chain that secures tools to the v-block with replaceable tong dies.
- Includes an air driven hydraulic pump with foot controls and pressure gauge.
- Provided with 18.750" X 18.750" base plate pre drilled for anchoring to floor.
- Stands approximately 40.000" tall.
- Has 50,000 ft.lbs. of clamping force at max 10,000 psi of pressure.





# POWER UNIT SELECTION CHART

POWER UNIT MODEL NUMBER	HORSEPOWER	PUMP GPM	MAX PRESSURE PSI	COOLER/ HEATER	STARTER	OPEN/ CLOSED	PUMP
DIESEL POWER UNITS							
DPU440-03	73	60	3,000	HEATER	ELECTRIC	OPEN	2 STAGE GEAR PUMP
DPU440-05	73	40	3,000	NEITHER	AIR	OPEN	2 STAGE GEAR PUMP
DPU440-06	73	40	3,000	NEITHER	ELECTRIC	OPEN	2 STAGE GEAR PUMP
DPU440-09	73	40	3,000	COOLER	ELECTRIC	OPEN	2 STAGE GEAR PUMP
DPU440-11	73	40	3,000	COOLER	AIR	OPEN	2 STAGE GEAR PUMP
DPU444-03	75	60	3,000	HEATER	AIR	OPEN	2 STAGE GEAR PUMP
DPU444 - ZONE II	75	60	3,000	COOLER	AIR	OPEN	2 STAGE GEAR PUMP
DPU660-05	114	60	3,000	NEITHER	AIR	OPEN	2 STAGE GEAR PUMP
DPU660-09	114	60	3,000	COOLER	ELECTRIC	OPEN	2 STAGE GEAR PUMP
DPU660-10	114	60	3,000	NEITHER	ELECTRIC	OPEN	2 STAGE GEAR PUMP
DPU660-11	114	60	3,000	COOLER	AIR	OPEN	2 STAGE GEAR PUMP
ELECTRIC POWER UNITS - BUCKING UNITS							
PU5060	50	60	3,000	NEITHER	ELECTRIC	CLOSED	VARIABLE DISPLACEMENT
PU5060-01	50	60	3,000	COOLER	ELECTRIC	CLOSED	VARIABLE DISPLACEMENT
PU7560	75	60	3,000	NEITHER	ELECTRIC	CLOSED	VARIABLE DISPLACEMENT
PU7560-01	75	60	3,000	COOLER	ELECTRIC	CLOSED	VARIABLE DISPLACEMENT
ELECTRIC POWER UNITS - TONGS							
PU2500E24	75	60	3,000	COOLER	ELECTRIC	OPEN	2 STAGE GEAR PUMP
PU2500E24-1	75	60	3,000	HEATER	ELECTRIC	CLOSED	VARIABLE DISPLACEMENT
PU2500E24-2	75	60	3,000	BOTH	ELECTRIC	OPEN	2 STAGE GEAR PUMP
PU7560-03	75	60	3,000	HEATER	ELECTRIC	OPEN	2 STAGE GEAR PUMP

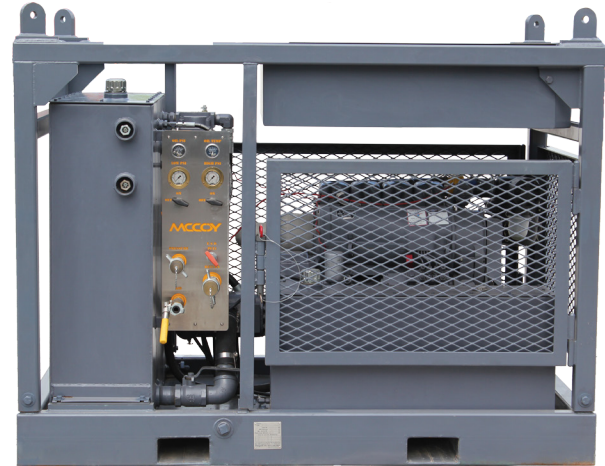


# DIESEL POWER UNITS

## AVAILABLE MODELS

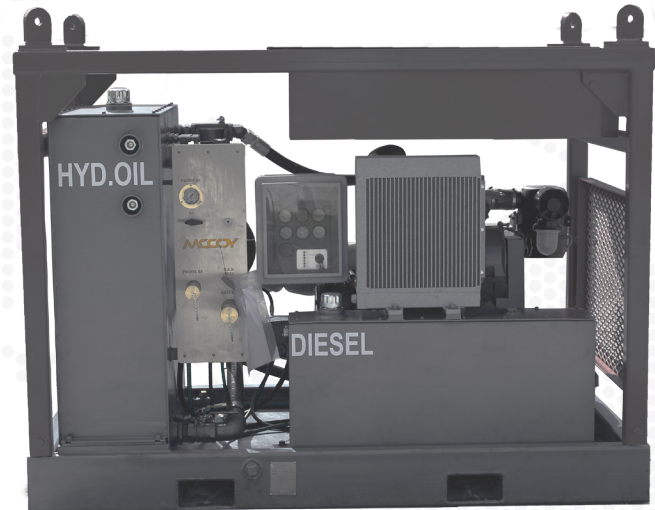
### DPU440-05, -11

**Engine:** Deutz 4 Cylinder  
-11 Model is Air Cooled  
**Engine BHP:** 73 HP @ 2,300 RPM  
**Hydraulic Pump:** 2 Stage Gear Pump  
**Maximum Pressure:** 3,000 PSI  
**Maximum Flow Rate:** 40 GPM  
**Hydraulic System:** Open  
**Starter Type:** Air Power Starter



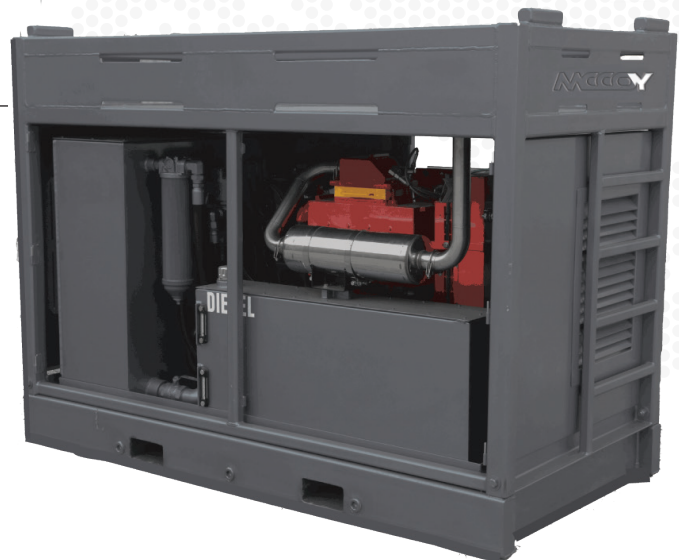
### DPU440-06, -09, -03

**Engine:** Deutz 4 Cylinder  
-09 Model is Air Cooled  
-03 Model has a Heater  
**Engine BHP:** 73 HP @ 2,300 RPM  
**Hydraulic Pump:** 2 Stage Gear Pump  
**Maximum Pressure:** 3,000 PSI  
**Maximum Flow Rate:** 40 GPM  
**Hydraulic System:** Open  
**Starter Type:** Electric Starter



### DPU444-03

**Engine:** Deutz 4 Cylinder  
**Engine BHP:** 75 HP @ 2,300 RPM  
**Hydraulic Pump:** 2 Stage Gear Pump  
**Maximum Pressure:** 3,000 PSI  
**Maximum Flow Rate:** 60 GPM  
**Hydraulic System:** Open  
**Starter Type:** Electric Starter



### DPU444 - ZONE II

**Engine:** JCB 4 Cylinder  
**Engine BHP:** 76 HP @ 2,200 RPM  
**Hydraulic Pump:** 2 Stage Gear Pump  
**Maximum Pressure:** 3,000 PSI  
**Maximum Flow Rate:** 60 GPM  
**Hydraulic System:** Open  
**Starter Type:** Air Power Starter

# DIESEL POWER UNITS

## AVAILABLE MODELS

### DPU660-05, -11

**Engine:** Deutz 6 Cylinder

-11 Model is Air Cooled

**Engine BHP:** 114 HP @ 2,300 RPM

**Hydraulic Pump:** 2 Stage Gear Pump

**Maximum Pressure:** 3,000 PSI

**Maximum Flow Rate:** 60 GPM

**Hydraulic System:** Open

**Starter Type:** Air Power Starter

### DPU660-10, -09

**Engine:** Deutz 6 Cylinder

-09 Model is Air Cooled

**Engine BHP:** 114 HP @ 2,300 RPM

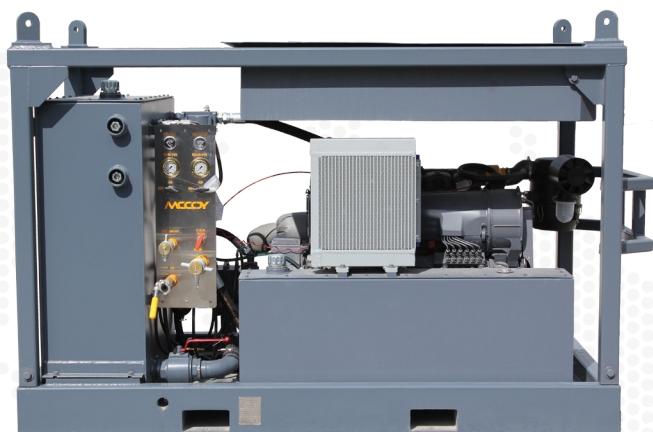
**Hydraulic Pump:** 2 Stage Gear Pump

**Maximum Pressure:** 3,000 PSI

**Maximum Flow Rate:** 60 GPM

**Hydraulic System:** Open

**Starter Type:** Electric Starter



# ELECTRIC POWER UNITS

## AVAILABLE MODELS

### **PU5060, -01**

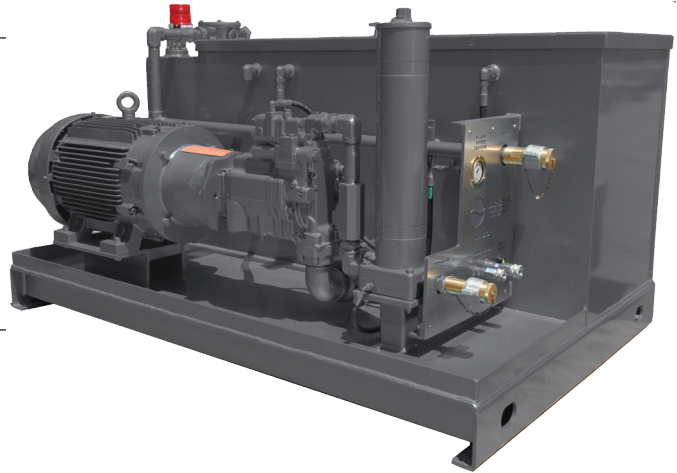
---

**Electric Motor:** 50 HP @ 1,800 RPM  
**Hydraulic Pump:** Variable Displacement  
**Maximum Pressure:** 3,000 PSI  
**Maximum Flow Rate:** 60 GPM  
**Hydraulic System:** Closed  
**Starter Type:** Electric Starter

### **PU7560, -01**

---

**Electric Motor:** 75 HP @ 1,800 RPM  
**Hydraulic Pump:** Variable Displacement  
**Maximum Pressure:** 3,000 PSI  
**Maximum Flow Rate:** 60 GPM  
**Hydraulic System:** Closed  
**Starter Type:** Electric Starter



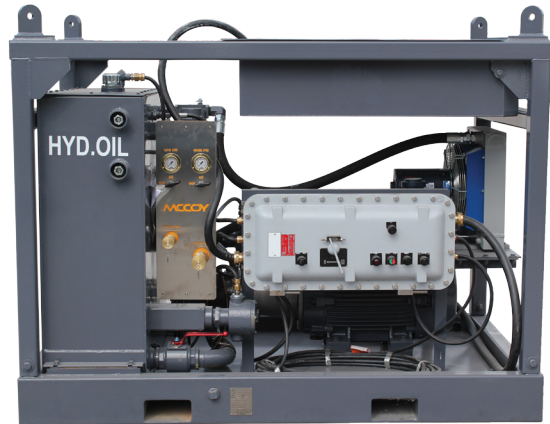
# ELECTRIC POWER UNITS

## FOR TONGS

### AVAILABLE MODELS

#### **PU2500E24, -2**

**Electric Motor:** 75 HP @ 1,800 RPM  
**Hydraulic Pump:** 2 Stage Gear Pump  
**Maximum Pressure:** 3,000 PSI  
**Maximum Flow Rate:** 60 GPM  
**Hydraulic System:** Open  
**Starter Type:** Electric Starter



# TONG AND BACKUP JAWS AND DIES

## WRAPAROUND TONG DIES

EQUIPMENT SIZE	MODEL #	JAWS	SIZE RANGE OF JAWS	NUMBER OF DIES	STEEL	GRITFACE®	ALUMINUM
3.500" STD	CLE3500	CJ-LF-35 / CJ-35B	2.063" TO 3.500"	2	CLE135XXXX*	BB135XXXX*	CLEA135XXXX*
5.500" STD	CLE5500	CJ-51A / CJ-51B	2.063" TO 3.500" / 3.625" TO 5.500"	2	CLE5500XXXX	BB5900XXXX	CLESA55XXXX
5.500" LJ	CLJ5500		2 SIDE	2 SIDE	CLJ5500XXXX	BB5600XXXX	CLJA5500XXXX
			1 BACK	1 BACK	CLJ5501XXXX	BB5601XXXX	CLJA5501XXXX
5.500" UHT	CLE5500	CJ-55A OLD STYLE	2.063" TO 5.000"	2	CLE5500XXXX	BB5800XXXX	CLFA5500XXXX
		CJ-LF-55A	2.063" TO 3.500"	2	CLE5500XXXX	BB5800XXXX	CLFA5500XXXX
		CJ-55B	3.625" TO 5.500"	2	CLJ5501XXXX	BB5601XXXX	CLJA5501XXXX
5.500" XHT	CLE5500XHT	CJ-LF-59B	2.063" TO 5.500"	2	CLJ5500XXXX	BB5601XXXX	
		CJ-59B	3.500" TO 5.500"	2	CLJ5500XXXX	BB5601XXXX	
5.500" CM	CM5500		3	3	BUC5500XXXX	BB5700XXXX	BUCA5500XXXX
7.625" UHT	CLE7625	CJ-76A	2.063" TO 4.500"	2	BUC4500XXXX	BB4500XXXX	BUCA4500XXXX
		CJ-76B	3.625" TO 7.625"	2	BUC7625XXXX	BB7625XXXX	BUCA7625XXXX
7.625" CM	CM7625		N/A	3	BUC7625XXXX	BB7625XXXX	BUCA7625XXXX
8.625" DP	CLE8625DP	CJ-76C	5.500" TO 7.625"	2	BUC7625-XXXX	BB7625-XXXX	BUCA7625-XXXX
8.625" DP	CLE8625DP	CJ-86A	5.500" TO 8.625"	2	BUC8625-XXXX	BB8625-XXXX	BUCA8625-XXXX
8.625" DP	CLE8625DP	CJ-LF-76D	2.375" TO 7.625"	2	BUC5500-XXXX	BB5700-XXXX	BUCA5500-XXXX
8.625" DP	CLE8625DP	CJ-LF-86B	5.500" TO 8.625"	2	BUC8625-XXXX	BB8625-XXXX	BUCA8625-XXXX
10.750"	CLE10750	CJ-10A	8.625" TO 10.750"	2	CLE1075-XXXX	BB1075-XXXX	
10.750"	CLE10750	CJ-LF-10A	2.375" TO 7.625"	2	CLE1075-XXXX	BB1075-XXXX	
14.000"	CLE14000	CJ-LF-14A	4.500" TO 7.625"	2	BUC7625-XXXX	BB7625-XXXX	BUCA7625-XXXX
14.000"	CLE14000	CJ-LF-14B	7.625" TO 10.750"	2	BUCM1075-XXXX	BB1075-XXXX	BUCA1075-XXXX
14.000"	CLE14000	CJ-LF-14C	7.625" TO 11.750"	2	CLEBU1175-XXXX	BB1175-XXXX	BUCA1175-XXXX
14.000"	CLE14000	CJ-14A	10.750" TO 14.000"	2	CLE1400-XXXX	BB1400-XXXX	N/A
					*XXXX IS THE O.D. OF PIPE		
14.000"	CLE14000DP	SEE TECHNICAL MANUAL					
20.000"	CLE20000	SEE TECHNICAL MANUAL					
20.000"	CLE20000XHT	SEE TECHNICAL MANUAL					
22.000"	CLE22000XHT	SEE TECHNICAL MANUAL					
26.000"	CLE26000	SEE TECHNICAL MANUAL					

# TONG AND BACKUP JAWS AND DIES

## WRAPAROUND BACKUP DIES

EQUIPMENT SIZE	MODEL	# OF DIES	STEEL	GRITFACE®	ALUMINUM
4	BUCS4000	3	BUC4000XXXX*	BB4000XXXX*	BUCA4000XXXX*
4.500" <b>LOCKJAW™</b>	BUCS4500	3	BUCS4500XXXX	BBS4500XXXX	BUCSA4500XXXX
4.000" STD	BUC4500	3	BUC4500XXXX	BB4500XXXX	BUCA4500XXXX
5.500" STD	BUCL5500	3	BUCL5500XXXX	BB5500XXXX	BUCLA5.5XXXX
5.500" <b>LOCKJAW™</b>	BUCS5500	2 SIDE	CLJ5500XXXX	BB5600XXXX	CLJA5500XXXX
		1 BACK	CLJ5501XXXX	BB5601XXXX	CLJA5501XXXX
5.000" UHT	BUC5500	3	BUC5500XXXX	BB5700XXXX	BUCA5500XXXX
5.500" DRILLPIPE	BUCD5500	3	BUC5500XXXX	BB5700XXXX	BUCA5500XXXX
5.500" XHT	BUCD55XHT	3	BUC5500XXXX	BB5700XXXX	BUCA5500XXXX
6.250" <b>LOCKJAW™</b>	BUCS6250	2 SIDE	BUCS6250XXXX	BB6250XXXX	BUCSA6250XXXX
		1 BACK	BUCS6251XXXX	BB6251XXXX	BUCSA6251XXXX
6.250" UHT	BUC6250	3	BUC7625XXXX	BB7625XXXX	BUCA7625XXXX
6.375" STD	BUC6375	3	BUC6375XXXX	BB6375XXXX	BUCA6376XXXX
7.625" UHT	BUC7625	3	BUC7625XXXX	BB7625XXXX	BUCA7625XXXX
7.625" <b>LOCKJAW™</b>	BUCS7625	3	BUC7625XXXX	BB7625XXXX	BUCA7625XXXX
8.625" UHT	BUC8625	3	BUC8625XXXX	BB8625XXXX	BUCA8625XXXX
8.625" DRILLPIPE	BUCDP8500	3	BUC8625XXXX	BB8625XXXX	BUCA8625XXXX
11.750" <b>LOCKJAW™</b>	BUCS11750-01	3 EA. 7.625" TO 11.750"	CLE10750-XXXX		
11.750" <b>LOCKJAW™</b>	BUCS11750-01	3 EA. 4.500" TO 7.625"	BUC7625-XXXX	BB7625XXXX	BUCA7625XXXX
11.750" <b>LOCKJAW™</b>	BUCS11750-01	3 EA. 2.375" TO 4.500"	BUC4500-XXXX	BB4500XXXX	BUCA4500XXXX
15.000" <b>LOCKJAW™</b>	BUCS15000	3 EA. 5.500" TO 7.625"	BUC7625-NNNNN	BB7625-NNNNN	BUCA7625-NNNNN
15.000" <b>LOCKJAW™</b>	BUCS15000	3 EA. 5.500" TO 8.625"	BUC8625-NNNNN	BB8625-NNNNN	BUCA8625-NNNNN
15.000" <b>LOCKJAW™</b>	BUCS15000	3 EA. 2.375" TO 5.500"	BUC5500-NNNNN	BB5700-NNNNN	BUCA5500-NNNNN
15.000" <b>LOCKJAW™</b>	BUCS15000	3 EA. 5.500" TO 8.625"	BUC8625-NNNNN	BB8625-NNNNN	BUCA8625-NNNNN
*XXXX IS THE O.D. OF PIPE					
21.000" <b>LOCKJAW™</b>	BUCS21000	SEE TECHNICAL MANUAL			
21.000" <b>LOCKJAW™</b>	BUCST21000	SEE TECHNICAL MANUAL			
23.000" <b>LOCKJAW™</b>	BUCST23000	SEE TECHNICAL MANUAL			

### TONG DIES

EQUIPMENT SIZE	MODEL	SIZE RANGE OF JAWS AND DIES
4.500"	SL4500	1.900" TO 5.000"*
5.500"	KT5500	2.063" TO 5.500"*
8.625"	KT8625	2.375" TO 8.625"*
9.625"	KT9625	2.345" TO 9.625"*
9.625"	LW9625	2.345" TO 9.625"*
13.625"	KT13625	4.500" TO 13.625"
14.000"	KT14000	7.000" TO 14.375"
14.000"	HD14000	7.000" TO 14.000"
20.000"	KT20000	9.625" TO 20.000"
25.000"	HD25000	10.750" TO 26.000"
31.000"	HD31000	13.375" TO 31.000"
WRAPAROUND DIES AVAILABLE		

### BACKUP DIES

EQUIPMENT SIZE	MODEL	SIZE RANGE OF JAWS AND DIES
5.500"	CAM STYLE	2.063" TO 5.500"
8.625"	CAM STYLE	2.375" TO 8.625"
8.625"	WEDGE STYLE	2.375" TO 8.625"
8.625"	WEDGE STYLE DRILLPIPE	3.500" TO 8.625"
9.625"	CAM STYLE	2.375" TO 9.625"
13.625"	CAM STYLE	3.500" TO 13.625"
14.625"	WEDGE STYLE	4.500" TO 14.625"
15.000"	FRAME MOUNTED WEDGE STYLE	4.500" TO 15.000"
16.000"	CAM STYLE	8.250" TO 16.000"
17.000"	CAM STYLE	4.500" TO 17.000"
20.000"	FRAME MOUNTED WEDGE STYLE	7.000" TO 20.000"
26.000"	WEDGE STYLE	10.750" TO 26.000"

# GRITFACE® DIES AND INSERTS

McCoy Global has set the standard for handling CRA tubulars using **GRITFACE®** dies. Today's hostile well environments often use CRA tubulars that require special handling tools. Our coating system combines the use of tungsten carbide particles and nickel chrome brazing material to insure optimum dimensional control. The **GRITFACE®** coating prevents creation of pits containing iron or steel which can contaminate the surface of CRA tubulars, causing rapid, premature corrosion failures.

**GRITFACE®** dies and inserts allow operators to utilize standard handling tools with CRA strings, especially where minimal marking and penetration are desired. The coating does not create stress risers like those generated by standard machine-toothed dies.

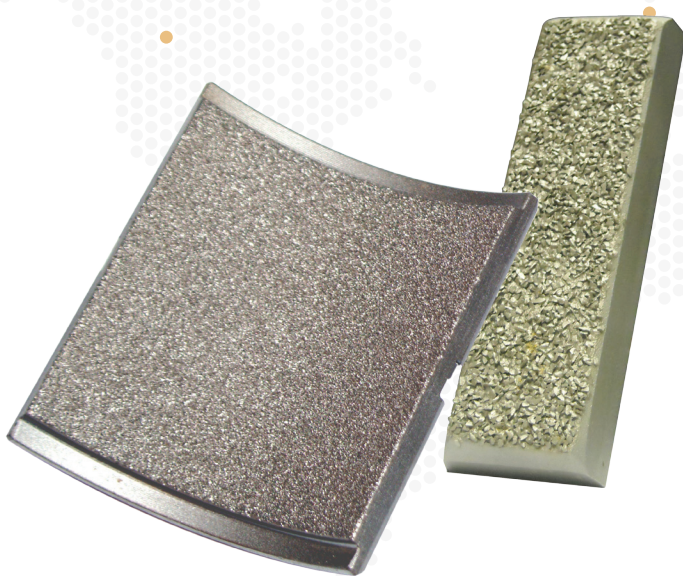
Over 155 **GRITFACE®** inserts are available for almost every handling tool and safety clamp, eliminating the need for specially adapted equipment and increasing the utilization of your handling tool inventory. In the field, our dies and inserts reduce operator fatigue and keep operators safe because they are not reaching into the tools at each connection.

**GRITFACE®** wraparound dies are available for our power tongs and backups in low to high torque applications. These dies enhance die torque capabilities for CRA tubulars without leaving the tooth marks normally seen with conventional steel dies.

## WHY GRITFACE® DIES AND INSERTS?

### BECAUSE THEY ARE:

- Valuable: Used to protect CRA and expandables tubulars from damage and corrosion.
- Innovative: Continuous research and development keeps pace with advancing technology in the field.
- Universal: The **ONLY** dies and inserts that are adapted to allow any handling tool to be used with expandables or CRA tubulars in compliance with API, ISO and NACE recommendations.
- Field tested: Used on tubulars from 1.06" to 24"; Heaviest string run to date weighs in excess of 400 tons; More than a decade of proven experience.
- Worldwide: Distributed globally for use with most of the world's OEM handling tools.





# DIES AND INSERTS

McCoy Global is a worldwide leader in manufacturing all of the world's most common dies and inserts for tubular handling equipment. Our inserts are machined, not cast, to supply the accuracy required for today's critical applications. Our dies are heat treated to provide maximum lifespan. All of our inserts are available in Standard tooth, Fine tooth and **GRITFACE®**.

**GRITFACE®** dies and inserts allow operators to utilize standard handling tools with CRA strings, especially where minimal marking and penetration are desired. **GRITFACE®** dies utilize a patented tungsten carbide coating which does not create stress risers like those generated by standard machine-toothed dies.

McCoy Global maintains a large inventory of tong and handling tool inserts for fast response 24/7/365.

We guarantee you will be satisfied with our products!

Handling tool inserts available through PDT:

- VARCO® rotary slips, casing elevators, power slips and circular buttons
- BJ-VARCO® MYT, YT, HYT, HYC and casing elevators
- BILCO dual tools and precision slips and elevators
- Type "T", "C", "MP" and "MPS" Safety Clamps
- Guiberson, Woolley®, Kelco™, Oil Country and Hydra-Rig inserts
- Now also a leading supplier of Eckel® Wrap-Around tong dies
- Also supplying CLINCHER® Wraparound tong and backup dies



McCoy Global USA, Inc.  
4225½ Highway 90 East, Broussard, LA 70518  
Phone: +1.337.837.6666 Fax: +1.337.837.6661  
Email: [dcsales@mccoyglobal.com](mailto:dcsales@mccoyglobal.com)

Varco® and Varco-BJ® are registered trademarks of National Oilwell Varco.

Woolley® is a trademark of Woolley Tool and Manufacturing Division.

Kelco™ is a trademark of Cooper Industries.

Eckel® is a registered trademark of Eckel Manufacturing, Inc.

CLINCHER® is a registered trademark of Superior Manufacturing & Hydraulics, Inc.

GRITFACE® is a trademark of Precision Die Technologies.



# LIFECYCLE SUPPORT

At McCoy, we use leading edge manufacturing technologies and techniques to produce parts we are proud to deliver to our customers. Our manufacturing knowledge, along with our engineering resources, ensure that your parts are timely and accurately produced to industry standard specifications. Our lean manufacturing capabilities allow us to provide reliable, on-time delivery of each job package at a competitive price.

We manufacture, resell and stock a wide variety of top-quality OEM replacement parts for tubular equipment, including tong parts, iron roughneck parts and pipe-handling parts. Our custom manufacturing process ensures that replacement parts are made to customer and manufacturer specifications, and can interchange with and function as original equipment manufacturer (OEM) parts.



# MCM60

## CALIBRATION MACHINE AND SERVICES

The McCoy Calibration Machine allows the user to accurately and precisely generate forces up to 60,000 lbs. to calibrate electronic and hydraulic load cells. Pressures up to 10,000 psi can be used to calibrate pressure gauges and tensioners. A two-stage, piston-style hand pump allows for fast response while a screw-type vernier pump offers more precise load application. Loads are verified using the provided measuring device, also known as a standard. Measurement from a single tension, compression or clevis pin style load cell will be read simultaneously to compare with above-mentioned standard. Includes a built-in cabinet for storage of adapters and measurement standards.

### SPECIFICATIONS:

**Hydraulic Pressure:** 10,000 psi

**Axial Loads:** 60,000 lbs.

**Compression Style Load Cells:**

- Hydraulic or Electronic
- 10.000" diameter, 10.000" high

**Tension Style Load Cells:**

- Hydraulic or Electronic
- 16.000" diameter
- 5.000" - 16.000" center distance
- 1.200" diameter clevis pin

**Clevis Pin Style Load Cells:**

- Electronic
- 2.000" diameter over 4.750" length

**Calibrated Load Ring:**

- 60,000 lbs. with 0.05% FS accuracy

**Calibrated Master Gauge:**

- 10,000 psi with 0.25% FS accuracy
- (higher accuracy available upon request)

**Overall Depth:** 24.000"

**Overall Width:** 42.000"

**Overall Height:** 89.000"

**Overall Weight:** 1,600 lbs.



# PNEUMATIC THREAD COMPENSATOR

The pneumatically-controlled thread compensator is designed to vertically support a string of pipe or casing in a derrick. Not only is this tool designed to precisely adjust the height of the suspended string for easy connection to the box-end of the pipe, it also serves to remove the vertical force vector from the joint during make-up or break-out.

During the threading or unthreading process the cylinder absorbs the height difference imparted to the string when the joints are made up or broken out.

The system is designed to connect to an instrument air supply (maximum supply pressure 100 psi), and the control panel is equipped with an air filtering and conditioning section.

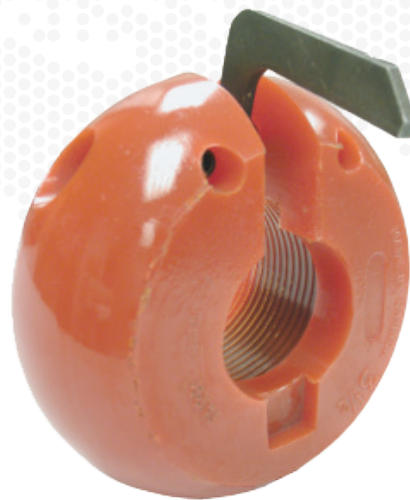
Air Supply (Maximum): 100 psi

Maximum Allowable Suspended Weight: 3,450 lbs.



# URETHANE THREAD PROTECTORS

The Quick-Clamp thread protectors are manufactured by moulding a high strength steel band inside tough, abrasion-resistant urethane. Thread protectors are available in the following sizes: 2-3/8", 2-7/8", 3-1/2", 4-1/2", 5", 5-1/2", 6-5/8", 7", 7-5/8", 8-5/8", 9-5/8", 10-3/4", 11-3/4", 13-3/8", 16", 18", 18-5/8", 20" and 24".



# TDMB

## TOP DRIVE MAKE/BREAK TOOL

The Top Drive Make/Break Tool (TDMB) is designed to reduce time and improve safety of operations when servicing the upper internal blow out preventer (IBOP) valves on VARCO® designed TDS-3, TDS-4 and TDS-5 Top Drives which use PH-60 and PH-85 pipe handlers. The TDMB eliminates the use of manual tongs, eliminating the need to have personnel in the direct vicinity of the operation.

### SPECIFICATIONS:

**Hydraulic Power Supply:** 2,000 psi and 5 - 35 GPM closed loop rig hydraulic power supply

**Max Torque & Speed:** 130,000 ft.lbs.

**Top Drive Subs:** VARCO® PH60 or PH85

**Anchor Geometry:** 27.500" and 37.500" API rotary tables

**Top Drive Break Intensifier:** 110 psi rig air pressure

**Overall Length:** 69.000"

**Overall Width:** 31.000"

**Overall Height:** 111.000"

**Overall Weight:** 4,200 lbs.



TDS-3, TDS-4, TDS-5, PH-60 and PH-85 are trademarks of National Oilwell Varco



# MCCOY SERVICE & SUPPORT

At McCoy Global, we understand the importance of equipment performance in the field. Dependable, quality equipment is the essential element in customers' ability to do their job. We continually strive to exceed those high expectations with our equipment offerings and after-market service and support.

Our service and support team consists of professional, experienced, competent personnel with the objective to "provide our valued Customers with the best in class service and solutions." With the recent additions to our service capabilities in Houston and Edmonton, our Customers will further benefit in 2013 from our continued expansion plans in Europe and Asia, bringing McCoy Global closer to key markets and enhancing Customer response and solutions.

## Scope of Service/Support Hubs:

- Technical Support:
- Training - equipment maintenance
- Training - equipment operation
- Tailored preventative maintenance program
- Equipment condition and refurbishment surveys

## Maintenance:

- Periodic service visits
- Calibration services
- Unscheduled equipment repairs
- Equipment modifications

## Intercompany Support:

- Equipment commissioning
- New product development support
- Manufacturing support
- Warranty service

## Equipment/Parts:

- Support geographic equipment sales
- Short and long term rental arrangements
- Parts distribution support
- Spare Parts, Dies, and Inserts support

## Locations of Service/Support Hubs:

- Broussard, Louisiana, USA
- Houston, Texas, USA
- Edmonton, Alberta, Canada
- Aberdeen, Scotland, Europe
- Singapore, Asia Pacific

## HYDRAULIC SERVICE AND REBUILD

McCoy Global's professional service team are specialists in the repair and rebuilding of pipe handling equipment. Our team has rebuilt over 175 pipe handlers, with the attention to detail that makes us the number one choice of drilling contractors for pipe handler repair.



Our process follows strict guidelines to assure all components meet or exceed OEM specifications. Customers are invited and encouraged to witness our inspection and testing procedures. On return to the customer, the unit is provided with a comprehensive data book and 90 day warranty. We also offer components or a complete unit exchange program.

Our service technicians are also skilled in repairing/rebuilding:

- Hydracat Cylinders
- E-Z Torque Cylinders
- Crane Boom Cylinders
- Skid Jack Cylinders
- VARCO® Iron Roughnecks
- Pipe Spinners
- Make/Break Tools
- Hydraulic Power Units
- Power Tongs and Bucking Units
- Gear Boxes

We also carry a full line of replacement parts:

- die holders
- retainer plates
- safety actuator arms
- assorted pins
- pistons
- glands
- gauges
- hoses
- manifolds

## Contact Information:

Email: [dcsales@mccoyglobal.com](mailto:dcsales@mccoyglobal.com)  
Edmonton, AB CANADA Tel: +1.780.453.3277  
Broussard, LA USA Tel: +1.337.837.8847  
Houston, TX USA Tel: +1.281.377.4264  
Aberdeen, Scotland UK Tel: +44.1224.245140  
Singapore, Republic of Singapore Tel: +65.6335.7660



# weCATT™

## WIRELESS SENSOR FOR PRECISE TORQUE, TENSION AND TURNS

The **weCATT™** Wireless Torque Sub is a tool that monitors makeup from a top drive and records torque, turns and hook load.

### **weCATT™ SPECIFICATIONS**

**Torque Capacity:** -50,000 to +50,000 ft.lbs. (Based on Thread Type)

**Hoist Capacity:** 200,000 lbs. compression to 1,000,000 lbs. tension with 2.25 safety factor (Based on Thread Type)

**Sampling Rate:** Dynamic, up to 480 samples/second

**Torque/Hook Load Accuracy:** 1% of Full Scale

**Turns Resolution:** 0.001 turns

**Temperature Range:** -40°C to 70°C (158°F)

**Battery Life:** 30 days of continuous use

**Transmission:** 2.4 GHz approved US, Canada and Europe

**Transmission Type:** line of sight

**Enclosure Rating:** Type 4X and IP 66

**Hazardous Area Classification:**

Class 1, Division 1, Zone 1, Group IIB, T4

**Protection Type:** EX Flameproof Enclosure (d)

**Certification:** CSA/UL/ATEX/IECEX

**Torque Sub:** Designed to API 8C Specifications

**Threads:** Manufactured to API 7 specifications

**Weight:** Approximately 350 lbs.

**Length:** Standard shoulder to shoulder 21.62" (18.63" is the minimum shoulder to shoulder length if there is zero recut allowance)



### **OPTIONS:**

1. **weCATT™** comes with **WINCATT®** Software & External Hardware for power tong application: (CRT and Power Tongs)
2. **weCATT™** comes with **WINCATT®** Software only (standard or Class 1 & Division 2 laptop) (CRT Only)
3. **weCATT™**: RS232 Data Stream: Torque, Tension, Turns, Battery Condition and Temperature
4. **weCATT™** comes with 4-20 mA analog outputs for torque and hook load



WINCATT® Torque/Turn Management System

# weCATT™

## WIRELESS SENSOR FOR PRECISE TORQUE, TENSION AND TURNS

McCoy's **weCATT™** Wireless Torque Sub provides solutions to customers' measurement challenges. Extensive field-testing has proven that **weCATT™** measures torque, turns, and hook load with unparalleled accuracy and responsiveness. These features combined with robust construction, long battery life, and easy integration with OEM top drives and casing running tools are key reasons why **weCATT™** has redefined tubular connection sensor technology. **weCATT™** transmits wirelessly to McCoy's **WINCATT®** Torque/Turn Management system, or any other data acquisition system of choice.

### KEY COMPETITIVE ADVANTAGES:

- Wireless data transmission
- Extended battery life: 30 days continuous use with the pending option of one year of continuous use (50% duty cycle)
- High dynamic sampling rate (up to 480 samples/second)
- Patent-pending gyrometric turns-counter uses no external encoder

**Classification:** Class 1, Division 1, Zone 1, Group IIB, T4

**Protection Type:** EX Flameproof Enclosure (d)

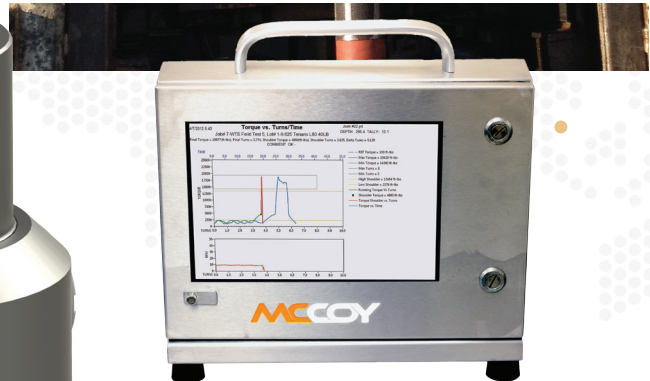
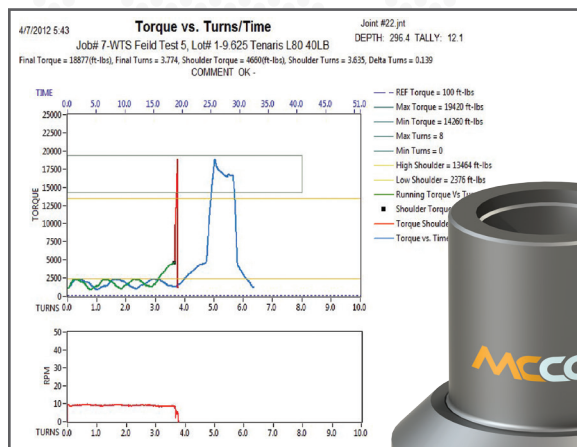
**Certification:** CSA/UL/ATEX/IECEX

**Torque Sub:** Designed to API 8C

**Threads:** Designed to API 7



weCATT™ in operation with CRT



weCATT™ reading on a WINCATT®



# weTORQ™105

## WRENCH AND SPINNER (PATENT PENDING)

The **weTORQ™** mechanical wrench and spinner is a very compact unit with the wrench and spinner mounted on a positioning arm, fitting standard floor sockets. The unit is designed to save time and money on land-based rigs, while also increasing safety on the rig floor. It was developed due to demands for higher torques but increased safety.

### KEY COMPETITIVE ADVANTAGES:

#### Advanced Technology:

- Adjustable force on torque cylinder. The force is adjustable by setting the pressure relief valve extending the life of the tool joint/pipe.
- "Soft start" feature that keeps a lower pressure on the lower clamp until the upper clamp is activated following spin-in. This prevents distortion of the box end of the drill pipe and reduces the potential for "egg shaping" the pipe connection.
- Wrenching action covers an arc of 75°, so pipe is tripped in a shorter time.

#### Intelligent Operation:

- Controlled movement to well center.
- Controlled make-up/break-out.

#### Reliability:

- Profiled Spin Rollers for maximum gripping and zero tubular marking.
- Uniform, repetitive and correct makeup of every connection, reducing chance of over-torquing connections.
- Up to 75° torque rotation.

#### Speed:

- Approximately 20-30 seconds per cycle.
- Fast and continuous controlled makeup/breakout.

#### Increased Safety:

- Eliminates handling of manual tongs, spinners and chains on the rig floor.
- Ergonomic controls.
- Hydraulically powered controls are mounted wirelessly/remotely.

#### Economical:

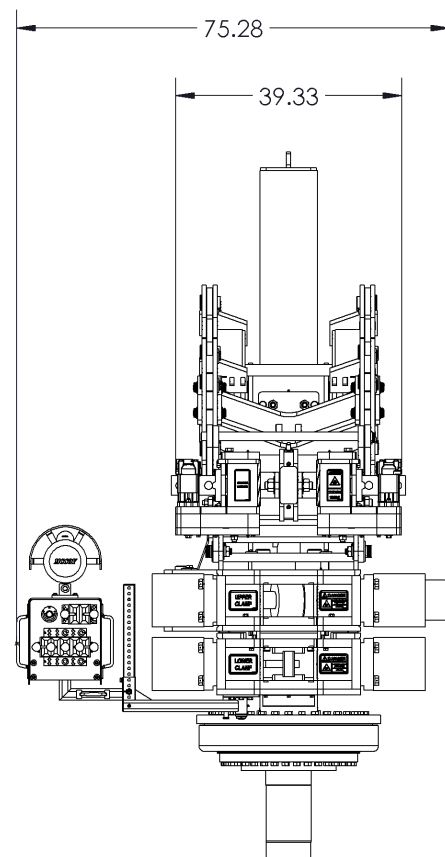
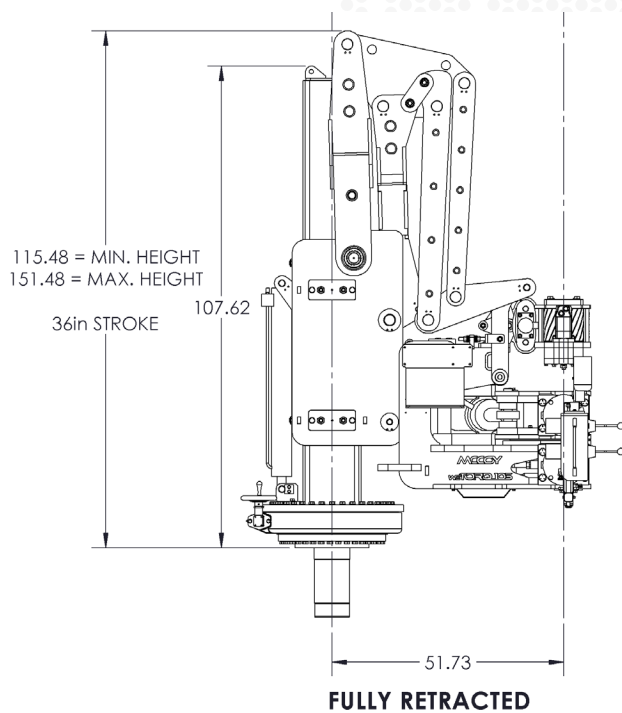
- Uses standard tong dies, resulting in excellent grip of and minimal marking on tool joints. The dies are readily available and easy to install.
- Uses common hydraulic hoses for minimum spare parts and quick replacement.
- Accessible and easy to work on for greasing and adjustments. Allows for rig friendly maintenance.



# weTORQ™105

## WRENCH AND SPINNER (PATENT PENDING)

PRODUCT SPECIFICATIONS		
SPIN/WRENCH TUBULAR RANGE	3.5" - 9.5"	89 mm - 241 mm
UPPER/LOWER CLAMP TUBULAR RANGE	4.0" - 9.5"	101 mm - 241 mm
RANGE OF TORQUE MOTION	75°	75°
MINIMUM TOOL JOINT HEIGHT	21"	533 mm
POSITIONER REACH	UP TO 144"	UP TO 3650 mm
MAKE-UP TORQUE	85,000 FT.LBS.	115260 Nm
BREAK-OUT TORQUE	105,000 FT.LBS.	142380 Nm
HYDRAULIC PRESSURE	2,900 PSI	200 BAR
HYDRAULIC FLOWRATE	34 GPM	132 L/MIN
WEIGHT WITHOUT POSITIONER	~4,500 LBS.	~2045 KG
WEIGHT WITH POSITIONER	~9,500 LBS.	~4300 KG



CONFIGURATION MODELS	
STANDARD	OPTION
COMPLETE WRENCH AND SPINNER	WRENCH ONLY
POSITIONER	HANGING
ONBOARD MANUAL	WIRELESS/REMOTE CONTROL



# weBUCK™

## ELECTRIC BUCKING UNIT (PATENT PENDING)

The **weBUCK™** is a closed head, electrically powered bucking unit intended for use in threading plant operations in a fully or semi-automated capacity. The unit can be integrated with any automated threading plant scheme and/or data acquisition system.

### KEY FEATURES:

#### Health, Safety & Environment:

- Full or semi-automated operation minimizing risk to operators.
- Quiet operation, less than 80 dB, meeting OSHA requirements.
- Electrically operated, eliminating risk of hydraulic leakage.

#### Economics:

- Configurable to communicate with any existing customer control system. Currently McCoy Global can accommodate Ethernet, PROFINET, Modbus TCP/IP, Profibus™, DeviceNet™ and CANopen™.
- The versatility of the designed control system and available I/O allow for a variety of customer system stopping and coupling thread engagement devices. For example, the system can work with hard-stop sensors, leading edge sensors, interferometers and LVDTs.
- The electrical drive greatly reduces maintenance cost over hydraulically powered units.

#### Ergonomic Control:

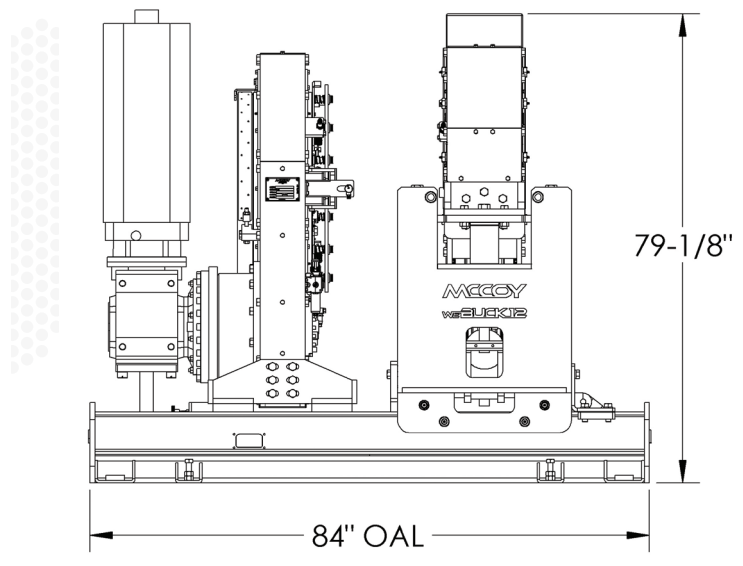
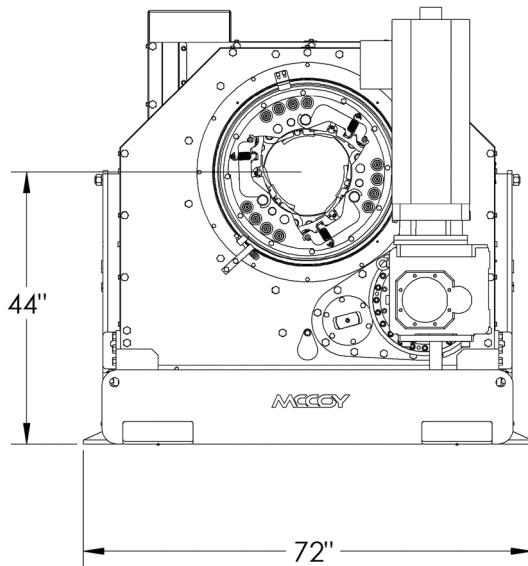
- Optimized using a HMI/touchscreen operator interface on a console, equipped with electromechanical contingency switches for continued use in the unlikely event of a HMI failure.
- Equipped with onboard data logging, troubleshooting and diagnostics capability.



# weBUCK™12

## ELECTRIC BUCKING UNIT (PATENT PENDING)

PRODUCT SPECIFICATIONS		
GRIPPING DIAMETER	2.375" - 11.750"	60 mm - 298 mm
MAXIMUM PASSAGE DIAMETER THROUGH HEAD	13.84"	351 mm
DIAMETRIC JAW CLEARANCE	2"	51 mm
MAXIMUM TORQUE (@ 2 RPM FOR SHORT DURATIONS)	50,000 FT.LBS.	67790 NM
MINIMUM TORQUE	1,500 FT.LBS.	2033 NM
MAXIMUM SPEED (@ MAX OF 10,000 FT.LBS.)	18 RPM	
MINIMUM SPEED	2 RPM	
ELECTRICAL REQUIREMENTS	480 V, 3 PHASE, 150 A	
AIR	80 PSI	
WEIGHT (INCLUDING CABINET AND CONTROL CONSOLE)	~13,000 LBS.	~5986 KG



# weHOLD™

## ELEVATOR/FLUSH MOUNTED SPIDER/SPIDER (PATENT PENDING)

### KEY FEATURES:

#### Safety:

- Equipped with "Pipe Coupling" and "Slip Set" detection, integrated into functions on the control panel providing the operator with positive indications that Elevator and/or Spider has positive control of the single joint or entire string.
- Designed to reduce pipe crushing effects, allowing the system to run longer strings than other comparable equipment currently available in the market.
- Standard design fits inside a Nat'l 49½" rotary table, reducing the need for scaffolding.

#### Efficiency:

- Central-on-board lubrication system allows for lubricating the slip/bowl interface during operation.
- Hydraulically operated slips provide push down force allowing for back-up torque reaction.

#### Economics:

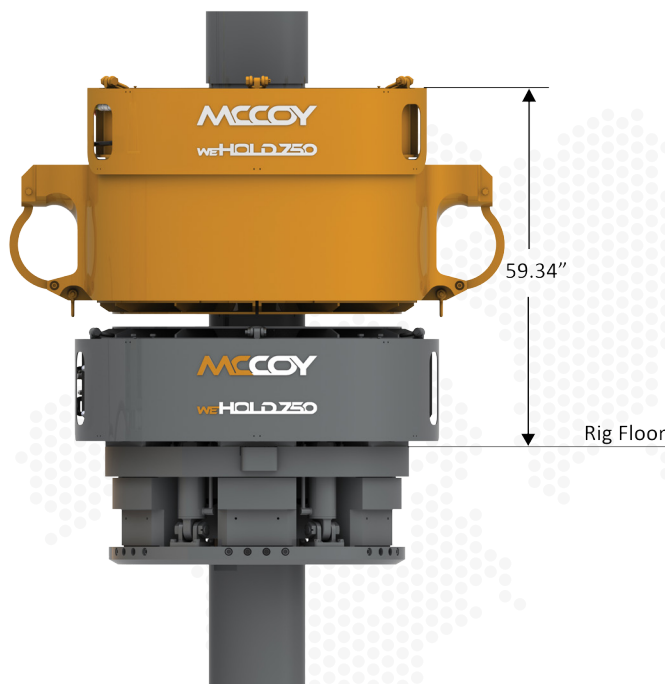
- No castings or welding in the primary load path, minimizing the chance of indications typically associated with castings and welds.
- Easy installation of the size specific components, insert carriers and guides without the need of special hand tools.



# weHOLD™750-24

ELEVATOR/FLUSH MOUNTED SPIDER/SPIDER (PATENT PENDING)

PRODUCT SPECIFICATIONS		
DESIGNED IN ACCORDANCE WITH API 8C & 7K		
CAPACITY RATING	750 SHORT TON	680 METRIC TON
SIZE RANGE	16" - 24"	406 mm - 610 mm
OPERATING PRESSURE	1,500 PSI	103 BAR
OPERATING FLOW	15 GPM	56 L/MIN
WEIGHT ELEVATOR W/O CARRIER	10,500 LBS.	4760 KG
WEIGHT FMS W/O CARRIER	5,930 LBS.	2690 KG
WEIGHT 16" (24") CARRIER SET	364 (308) LBS.	165 (140) KG
FMS CONFIGURATION	49-1/2" ROTARY TABLE	



UNDER DESIGN			
MODEL	CAPACITY RATING	SIZE RANGE	FMS CONFIGURATION
weHOLD™500-16 (ELEVATOR/FMS/SPIDER)	500 SHORT TON	6.625" - 16"	37-1/2" RT
weHOLD™350-963 (FMS ONLY)	350 SHORT TON	4.5" - 9.625"	27-1/2" RT



# weVERIFY™

## TORQUE CALIBRATION BAR

### 7-5/8" O.D.

**Torque Rating:** 50,000 ft.lbs.

**Grip Length:** 22"

**Accuracy:** +/- 1% of Full Scale

Can be used horizontally or vertically

**Options:** removable sleeves

### 9" O.D.

**Torque Rating:** 120,000 ft.lbs.

**Grip Length:** 22"

**Accuracy:** +/- 1% of Full Scale

Can be used horizontally or vertically

### 11¾" O.D

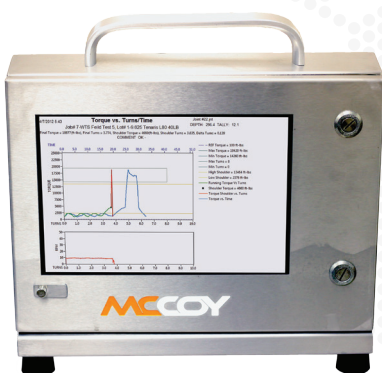
**Torque Rating:** 150,000 ft.lbs.

**Grip Length:** 22"

**Accuracy:** +/- 1% of Full Scale

Can be used horizontally or vertically

Output from the weVERIFY™ Torque Calibration Bar is displayed on an LCD monitor. Real-time data is compatible with the WINCATT® systems which allow McCoy's service technicians to perform online/remote calibration.



# TONG POSITIONER SYSTEM

The HYTOPS3 system allows the operator to control every tong and backup function. It can use McCoy's portable track system or rig's VARCO Iron Roughneck\* tracks. It is typically used with the following model tongs:

- CLE14000
- CLE20000
- CLE22000XHT
- CLE26000UHT

The basic specifications for the HYTOPS3 unit:

**Tong Capability:** up to 26"

**Height at Minimum Elevation:** 146"

**Maximum Torque Capacity:** 150,000 ft.lbs.

**Width:** 81"

**Length (Extended):** 242-1/2"

\*VARCO Iron Roughnecks are trademarks of National Oilwell VARCO.

Covered by one or more US, Canadian and foreign patents.

\*Available for shop applications only.

