

# **Elcometer 102**

## **Needle Pressure Gauge**

### **Operating Instructions**



elcometer<sup>®</sup> is a registered trademark of Elcometer Limited.

All other trademarks acknowledged.

© Copyright Elcometer Limited. 2012.

All rights reserved. No part of this Document may be reproduced, transmitted, transcribed, stored (in a retrieval system or otherwise) or translated into any language, in any form or by any means (electronic, mechanical, magnetic, optical, manual or otherwise) without the prior written permission of Elcometer Limited.

A copy of this Instruction Manual is available for download on our website via [www.elcometer.com](http://www.elcometer.com).

## CONTENTS

---

Section	Page
1 About your gauge . . . . .	2
2 Getting started. . . . .	4
3 Maintenance/Storage . . . . .	5
4 Spare parts and accessories . . . . .	5
5 Technical specifications. . . . .	5
6 Related equipment . . . . .	5

Thank you for your purchase of this Elcometer 102 Needle Pressure Gauge. Welcome to Elcometer.

Elcometer are world leaders in the design, manufacture and supply of inspection equipment for coatings and concrete. Our products cover all aspects of coating inspection, from development, through application to post application inspection.

Your Elcometer 102 Needle Pressure Gauge is a world beating product. With the purchase of this product you now have access to the worldwide service and support network of Elcometer. For more information visit our website at [www.elcometer.com](http://www.elcometer.com)

## **1 ABOUT YOUR GAUGE**

---

The Elcometer 102 Needle Pressure Gauge is a simple, essential tool, which allows quick and easy measurements of air pressure in a blast hose and air hose that are responsible for decreased production rates, increased abrasive consumption and improper anchor profile in abrasive blasting systems. This tool verifies the nozzle pressure which is critical to blasting performance. The nozzle pressure should be checked every day.

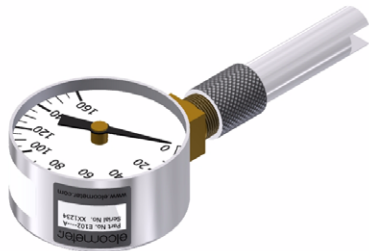
### **1.1 GAUGE FEATURES**

- Range 0 to 160 psi
- Extruded aluminium case for superior durability
- Easy to read display
- High accuracy

## 1.2 WHAT THE BOX CONTAINS

- Elcometer 102 Needle Pressure Gauge
- Pressure gauge guard
- Spare hypodermic needle
- Vinyl pouch
- Operating instructions

The Elcometer 102 Needle Pressure Gauge is packed in a cardboard and foam package. Please ensure that this packaging is disposed of in an environmentally sensitive manner. Please consult your local Environmental Authority for further guidance.



**To maximise the benefits of your new Elcometer 102 Needle Pressure Gauge please take some time to read these Operating Instructions. Do not hesitate to contact Elcometer or your Elcometer supplier if you have any questions.**

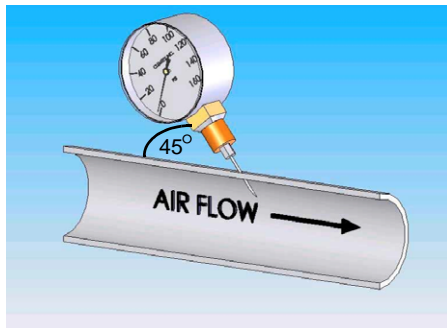
## 2 GETTING STARTED

---

1. Unscrew and remove the needle guard from the gauge, keeping it in a safe place.
2. Using the machined end of the needle guard, tighten the needle to the gauge body.
3. Lubricate the needle with a little water and area on the hose where the needle will be inserted.
4. Insert the needle pressure gauge slowly into the hose at a 45 degree angle away for air flow as shown.

**Note:** *The needle tip is made with a 45 degree angle. Firmly insert the needle into the hose away from the flow of air/abrasive. Insert the needle slowly as the needle can bend and break.*

5. Record the pressure reading on the gauge.
6. Remove needle pressure gauge.
7. Screw back the protective needle guard on to the gauge.



The operator must wear safety eye protection and government approved protective equipment.

### 3 MAINTENANCE/STORAGE

---

In order to prolong the life of the Elcometer 102:

- Ensure you lubricate the needle with a little water and area where the needle will be inserted
- Do not subject the gauge to a strong impact
- Clean the gauge with a soft, dry cloth such as those made to clean eyeglasses. Do not use solvents!

### 4 SPARE PARTS AND ACCESSORIES

---

Replacement Needle	T10223557
--------------------	-----------

### 5 TECHNICAL SPECIFICATIONS

---

Range:	0 - 160 psi
--------	-------------

### 6 RELATED EQUIPMENT

---

In addition to the Elcometer 102 Needle Pressure Gauge, Elcometer produces a wide range of environmental measuring equipment and other equipment for measuring the characteristics of surface coatings.

Users of the Elcometer 102 Needle Pressure Gauge may also benefit from the following Elcometer products:

- Elcometer 103 Blast Nozzle Gauge
- Elcometer 224 Digital Surface Profile Gauge

For further information contact Elcometer, your local Elcometer supplier, or visit [www.elcometer.com](http://www.elcometer.com)