



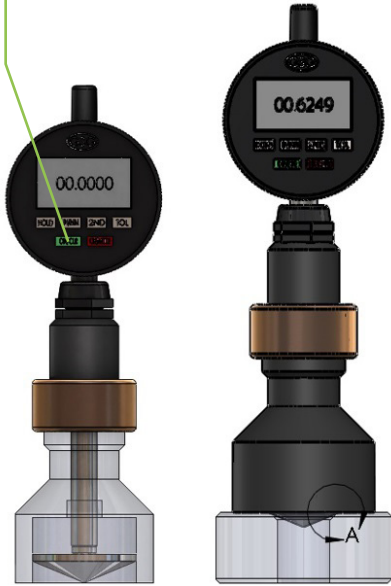
Chamfer Gages

www.gsgage.com

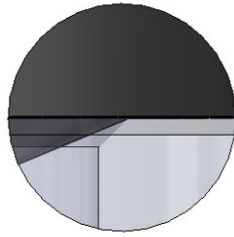


62/322,439

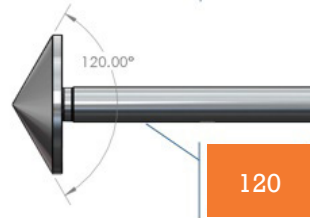
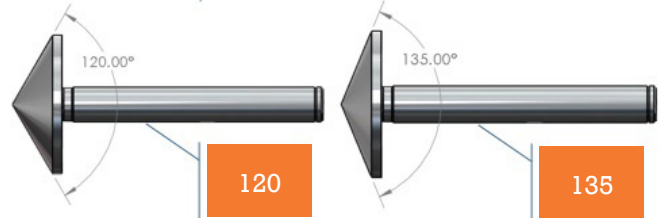
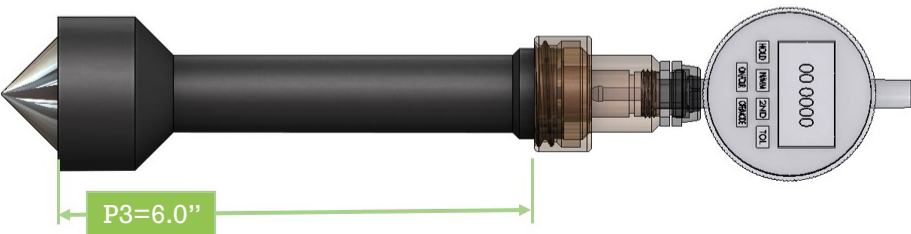
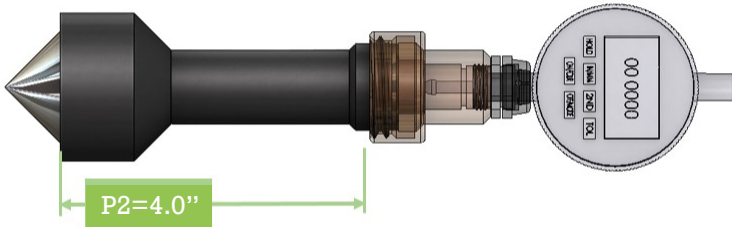
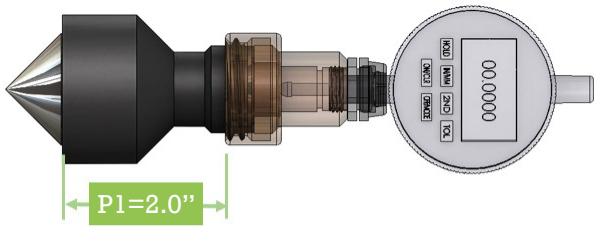
Place gage anvil on flat surface & press "ON/CLR" button.



- Ready: Place gage firmly on a flat surface
- Set: Press "ON/CLR"
- Go: Place gage in hole feature (Large end size displays on screen)



DETAIL A
SCALE 2:1



Custom Angles Available



Upper Body Assembly



Individual Anvils & Masters



Fits "all" anvil attachments

Includes:

- 1 - GSG Indicator
- 1 - Collet Assy
- 1 - Attachment Housing
- 1 - Thumb Ring

\$645.00 each

#GSG150CGB

GSG Digital Chamfer (P/N Q3110-GSG) Indicator features:

- Hard programmed ratio measuring mode
- SPC cable USB, MTI, RS232
- Travel reverse
- Auto off
- Rotating Bezel
- Internal & external serial numbers
- T.I.R measuring with low & high storage recall
- Power with batteries
- Additional power options through AC jack or data output
- User tolerance settings (high & low)
- Up to 4 user changeable resolutions
- Inch/metric display conversion
- Large LCD display
- Maximum reading hold
- Display/freeze reading hold
- Minimum reading hold
- Extra large number display

GSG "Low Profile" Stem Collet

Accepts 0.375 indicator stems

Item #	Stem Diameter	Price
CH312	5/16"	\$25.00
CH375	3/8"	\$25.00

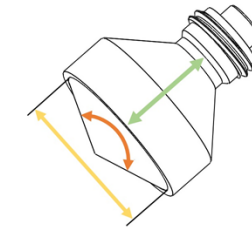


Lowest profile on the market

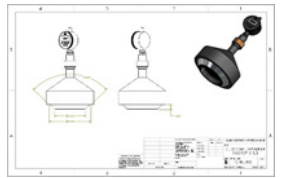
0.500

Individual Anvil Part Numbers

CG	092	D375	P1
Gage Code	Included Angle	Large End Diameter of Anvil	Length Code



Item #	Angle (included)	Large End Diameter	(*) Anvil Length Code "P1"	(*) Anvil Length Code "P2"	(*) Anvil Length Code "P3"
CG062D0375*	62° Anvil	0.3750	\$195.00	\$310.00	\$395.00
CG062D0500*	62° Anvil	0.5000	\$260.00	\$370.00	\$440.00
CG062D0750*	62° Anvil	0.7500	\$300.00	\$390.00	\$490.00
CG092D0375*	92° Anvil	0.3750	\$205.00	\$315.00	\$405.00
CG092D0500*	92° Anvil	0.5000	\$270.00	\$380.00	\$455.00
CG092D0750*	92° Anvil	0.7500	\$310.00	\$395.00	\$595.00
CG092D1250*	92° Anvil	1.2500	\$330.00	\$430.00	\$615.00
CG092D1500*	92° Anvil	1.5000	\$350.00	\$505.00	\$635.00
CG120D0750*	120° Anvil	0.7500	\$310.00	\$395.00	\$420.00
CG120D1500*	120° Anvil	1.5000	\$345.00	\$510.00	\$540.00
CG120D2500*	120° Anvil	2.5000	\$475.00	\$575.00	\$660.00
CG120D3250*	120° Anvil	3.2500	\$565.00	\$765.00	\$795.00
CG135D0750*	135° Anvil	0.7500	\$310.00	\$410.00	\$440.00
CG135D1500*	135° Anvil	1.5000	\$355.00	\$520.00	\$590.00
CG135D2500*	135° Anvil	2.5000	\$485.00	\$606.00	\$675.00
CG135D3500*	135° Anvil	3.5000	\$595.00	\$675.00	\$815.00



Custom sizes available

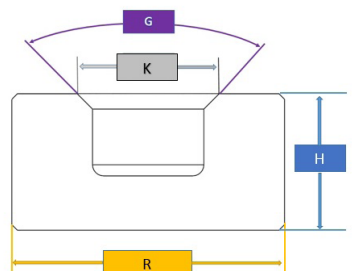
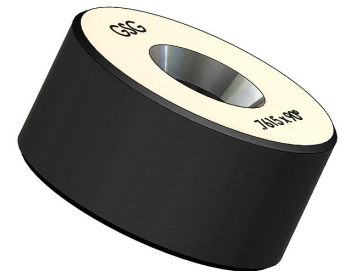
- Calibration included
- 5% discount on 5 or more
- Call factory for custom lengths up to 12"

Chamfer Ring Masters

Class "X" Tolerance

- Calibration included
- Call factory for custom sizes

Item #	G	K	H	R	Thru Hole Size	A2 Steel Re58-62	Carbide with Steel Jacket
TPG90K250	90° INCLUDED	0.25	0.5	1.75	0.125	\$230.00	\$285.00
TPG90K375	90° INCLUDED	0.375	0.5	1.75	0.25	\$241.00	\$300.00
TPG90K500	90° INCLUDED	0.5	0.5	1.75	0.25	\$253.00	\$315.00
TPG90K750	90° INCLUDED	0.75	0.75	2	0.5	\$265.00	\$330.00
TPG90K100	90° INCLUDED	1	1	2.5	0.75	\$278.00	\$346.00
TPG90K125	90° INCLUDED	1.25	1	2.5	1	\$291.00	\$363.00
TPG90K150	90° INCLUDED	1.5	1	3	1.25	\$305.00	\$381.00
TPG90K175	90° INCLUDED	1.75	1	3.5	1.5	\$320.00	\$400.00
TPG90K200	90° INCLUDED	2	1	3.5	1.75	\$336.00	\$420.00





Custom Ends Available

The most accurate, most versatile Chamfer Gage in existence...

Available in many different anvil styles to suit special applications.



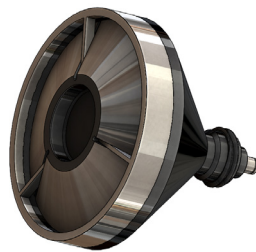
Non-Bladed ID



Non-Bladed Large OD



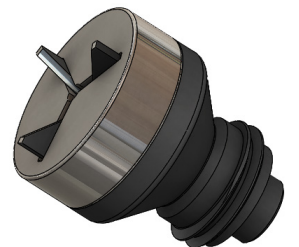
Small ID Bladed



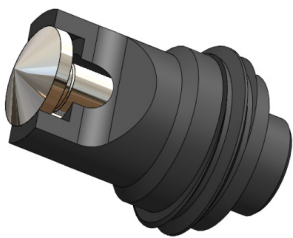
Large ID Bladed



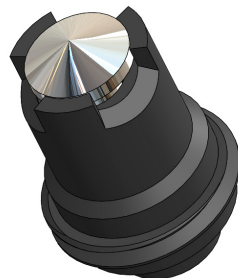
Micro-Anvils



Bladed OD



Non-Bladed Relieved



Non-Bladed Tri-Lobed



Non-Bladed Extended Reach



Chamfer Gage Cases by Pelican™

- Available for any size set
- Custom sizes also available

\$199.00 each

Sold Through Authorized GSG Distributors